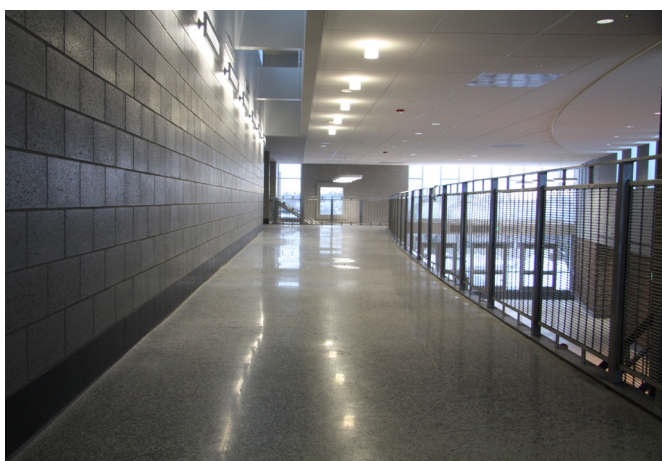




CHEM HARD™

CHEM HARD™ chemically reacts with soft free lime and calcium carbonate compounds in concrete to densify and create, chemically resistant surfaces. CHEM HARD is a Low VOC, colourless solution of a carefully controlled concentration of 100% active chemicals with a non-acid penetrant. CHEM HARD may be applied to fresh or hardened concrete as a chemical hardener and dustproof.

**Globally Proven
Construction Solutions**



FEATURES/BENEFITS

- A low cost treatment for exposed concrete surfaces
- Residue-free surface allows bond of various paints, adhesives or toppings
- Low odour
- No solvent vapours
- Fast drying

USES

CHEM HARD is recommended for:

- light industrial plants
- warehouses
- laundries
- food storage plants
- bakeries

It is also appropriate for areas with frequent foot traffic such as:

- civic centers
- sports arenas
- stadiums
- other commercial buildings.

PACKAGING

- 18.9 L (5 Gal)
- 208 L (55 Gal)

SUITABLE SUBSTRATES

- Existing Concrete
- Freshly Poured Concrete

SHELF LIFE

CHEM HARD containers are to be sealed and stored in a cool, dry place above 4°C. Shelf life is two years in unopened containers when properly stored. Do not allow to freeze

MANUFACTURER

LATICRETE Australia Pty Ltd
29 Telford Street
Virginia, QLD 4014 Australia

Telephone: 07 3865 1599
Toll Free: 1800 331 012
Fax: 07 3865 2250
Internet: www.laticrete.com.au

Approximate Coverage

Typical Application rate: 7.3 m²/L

Limitations

- Apply when concrete surface temperatures are 4°C and rising
- Apply to oil-free and thoroughly cleaned, sound concrete surfaces
- Provide adequate ventilation in enclosed areas to facilitate proper drying
- Do not puddle

Cautions

- Keep from freezing
- Wear protective gloves and goggles
- Avoid prolonged skin contact and absolutely no contact with all food stuffs
- Please refer to the safety data sheet (SDS) for more detailed information

Mock-ups and field test areas are required in order to validate performance and appearance related characteristics (including but not limited to colour, inherent surface variations, wear, anti-dusting, abrasion resistance, chemical resistance, stain resistance, coefficient of friction, etc.) to ensure system performance as specified for the intended use, and to determine approval of the decorative flooring system.

TECHNICAL DATA

Applicable Standard and Test Methods

Fed. Spec. CEGS 03300 4-79,

ACI 302, Class 1 through 4 Concrete Floors

Property	Observed
Viscosity	Water like
Colour	Clear
Type Solids	Sodium Silicate
VOC g/L	0

Specifications are subject to change without notification. Technical data shown in product data sheets are typical but reflect laboratory test procedures conducted in laboratory conditions. Actual field performance and test results will depend on installation methods and site conditions. Field test results will vary due to critical job site factors. All recommendations, statements and technical data contained in this data sheet are based on tests we believe to be reliable and correct, but accuracy and completeness of said tests are not guaranteed and are not to be construed as a warranty or guaranty of any kind. Satisfactory results depend upon many factors beyond the control of LATICRETE Australia. User shall rely on their own information and tests to determine suitability of the product for the intended use and user assumes all risk, loss, damage, expense and liability resulting from their direct use, indirect use or consequential to their use of the product. LATICRETE shall not be liable to the buyer or any third party for any injury, loss or damage directly or indirectly resulting from use or inability to use the product.

INSTALLATION

Old Concrete:

Surfaces must be sound and clean. All residue, oil, sealers, waxes, contaminants and laitance must be removed from surfaces for maximum penetration. Remove unsound concrete and repair holes, cracks and deteriorated areas. Apply two or more uniform coats at the rate of 7.3 m²/L each coat as needed. Allow a minimum of 4 hours between coats. Apply to oil-free and thoroughly cleaned, sound concrete surfaces. Provide adequate ventilation in enclosed areas to facilitate proper drying. Do not puddle.

New Concrete:

Spray first coat uniformly after surface water glaze is gone, at the rate of 7.3 m²/L. Apply second coat uniformly at the same rate in the opposite direction. Squeegee or wipe up all puddling. Fresh concrete placed in enclosed areas without adequate ventilation will hold water in concrete causing a super saturated condition. When CHEM HARD is applied in such conditions, it may build on surfaces creating a very slippery jelly-like silicate residue. Flush with water and squeegee off residue before it dries. Re-apply CHEM HARD after floor has thoroughly dried.

AVAILABILITY AND COST

Availability

LATICRETE materials are available worldwide.

For Distributor information:

Toll Free: 1800 331 012

Telephone: 07 3865 1599

For online distributor information, visit LATICRETE at www.laticrete.com.au

Cost

Contact a LATICRETE Distributor in your area.

MAINTENANCE

The long term performance, appearance, and life expectancy of wear surface products are critically dependent upon a good routine maintenance program designed specifically for the installed wear surface type, traffic, and other conditions. Properly placed walk-off mats, inside and outside will help increase the life of the floor. Some cleaning products and equipment or improper use of products can damage a wear surface appearance over time. Recommended maintenance program consists of frequent and thorough cleanings utilizing FGS CONCRETE CONDITIONER. Frequency of washing will vary, as it may be necessary daily, weekly or less frequently depending on floor usage and age. A mechanical walk-behind or ride-on scrubber is an efficient and economical means of regularly cleaning concrete floors. Only soft scrubbing or soft brush attachments should be used when mechanically scrubbing your floor. Do not use aggressive abrasive pads or brushes. The use of black scrubbing pads, diamond impregnated pads or carbide impregnated type brushes may dull the surface gloss. Wet mops work well on small floors or places where a mechanical scrubber will not fit.

TECHNICAL SERVICES

Technical assistance

Information is available by calling:

Toll Free: 1800 331 012

Telephone: 07 3865 1599

Fax: 07 3865 2250

Technical and safety literature

To acquire technical and safety literature, please visit our website at www.laticrete.com.au

DISCLAIMER

- The information contained in this document is given in good faith and to the best of our knowledge is true and accurate.
- This information is subject to change without notice and it is the responsibility of the user to obtain up to date and current information.
- The use of this product is beyond our control and LATICRETE is not responsible for any loss or damage arising from the incorrect use of this product.
- Efflorescence is a normal condition of Portland cement and is not covered by any warranty.

LATICRETE Australia Pty Ltd
29 Telford Street, Virginia
QLD 4014 Australia
1800 331 012
www.laticrete.com.au