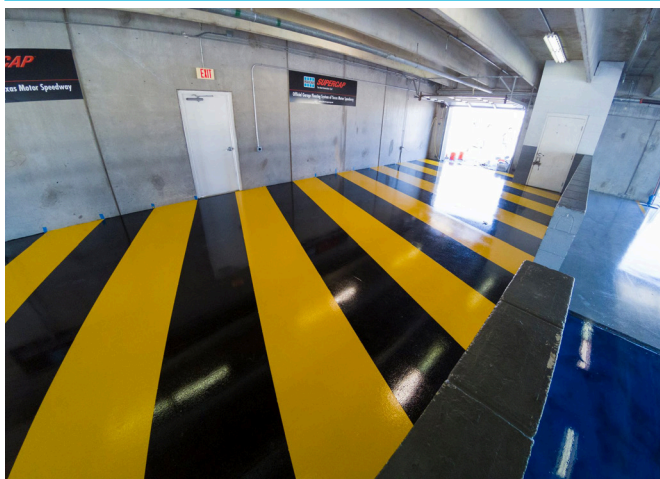




**Globally Proven
Construction Solutions**

SPARTACOTE™ Polyaspartic Pigments

SPARTACOTE™ Polyaspartic Pigments are designed to be used exclusively with SPARTACOTE FLEX SB™, SPARTACOTE FLEX XT™ and SPARTACOTE FLEX PURE™ polyaspartic coatings. Available in 14 standard colours, these materials are manufactured through a proprietary process in which raw pigment elements are ground and subsequently combined with the highest quality polyaspartic resins available. Once ready for use, these concentrated pigments are dispersed directly into short-filled part A pigment base.



FEATURES/BENEFITS

- 14 standard colours, including safety colours
- UV stable, suitable for exterior applications
- Excellent colour hide and retention
- Easy to use on-site colour dispersion system

SUITABLE SUBSTRATES

- As per SPARTACOTE Polyaspartic Coating

MANUFACTURER

LATICRETE Australia Pty Ltd
29 Telford Street
Virginia, QLD 4014 Australia

Telephone: 07 3865 1599
Toll Free: 1800 331 012
Fax: 07 3865 2250
Internet: www.laticrete.com.au

USE

- Suitable for interior or exterior applications

COVERAGE

- See applicable SPARTACOTE Polyaspartic Coatings coverage chart

PACKAGING

- Packaging
- 0.9 L (1 qt) for 2.8 L (0.75 gal) part A base
- 4.7 L (1.25 gal) for 14.2 L (3.75 gal) pigment base
- Available in 14 standard colours including safety colours pre-dispersed form upon request. SPARTACOTE FLEX SB polyaspartic coating is available in a White.

SHELF LIFE

- Three years unopened. Store at 4° to 24°C in a covered area (out of the sun). Maintain a consistent storage temperature prior to application. Material should be kept in a cool dry place prior to application.

Limitations

Refer to data sheet for applicable SPARTACOTE™ Polyaspartic Coatings

Cautions

- Refer to Safety Data Sheet (SDS)

Mock-ups and field test areas are required in order to validate performance and appearance related characteristics (including but not limited to colour, inherent surface variations, wear, anti-dusting, abrasion resistance, chemical resistance, stain resistance, coefficient of friction, etc.) to ensure system performance as specified for the intended use, and to determine approval of the decorative flooring system.

TECHNICAL DATA

Working Properties

Specifications are subject to change without notification. Technical data shown in product data sheets are typical but reflect laboratory test procedures conducted in laboratory conditions. Actual field performance and test results will depend on installation methods and site conditions. Field test results will vary due to critical job site factors. All recommendations, statements and technical data contained in this data sheet are based on tests we believe to be reliable and correct, but accuracy and completeness of said tests are not guaranteed and are not to be construed as a warranty or guaranty of any kind. Satisfactory results depend upon many factors beyond the control of LATICRETE Australia. User shall rely on their own information and tests to determine suitability of the product for the intended use and user assumes all risk, loss, damage, expense and liability resulting from their direct use, indirect use or consequential to their use of the product. LATICRETE shall not be liable to the buyer or any third party for any injury, loss or damage directly or indirectly resulting from use or inability to use the product.

INSTALLATION

Mixing

Note: Maintain a consistent storage temperature prior to application. Material should be kept in a cool dry place prior to application. Use only with SPARTACOTEFLEX SB™, SPARTACOTE FLEX XT™ and SPARTACOTE FLEX PURE™ polyaspartic coatings.

Pigmented Coatings

Add full contents of SPARTACOTE Polyaspartic Pigments directly into short filled Part A Tint Base. Mix pigment into Part A with a slow speed drill mixer for 2 minutes to fully disperse the resin pigments. Failure to properly mix pigments may lead to an inconsistent finish and reduced product performance.

AVAILABILITY AND COST

Availability

LATICRETE® and SPARTACOTE materials are available worldwide.

For Distributor information:

Toll Free: 1800 331 012

Telephone: 07 3865 1599

For online distributor information, visit LATICRETE at www.laticrete.com.au

Cost

Contact a LATICRETE Distributor in your area.

MAINTENANCE

The long term performance, appearance, and life expectancy of wear surface products are critically dependent upon a good routine maintenance program designed specifically for the installed wear surface. SPARTACOTE polyaspartic and epoxy floor coating systems are nonporous, causing dirt and contaminants to remain on the surface. The use of properly placed walk-off mats, inside and outside, will help increase the life of the floor. Recommend maintenance program consist on frequent and through cleaning utilizing a neutral pH cleaner (e.g. Simple Green®). Frequency of washing will vary depending on floor usage type, traffic and age.

Please Refer to TDS 1420 "SPARTACOTE Floor Maintenance Guide" available at www.laticrete.com for more information.

TECHNICAL SERVICES

Technical assistance

Information is available by calling:

Toll Free: 1800 331 012

Telephone: 07 3865 1599

Fax: 07 3865 2250

Technical and safety literature

To acquire technical and safety literature, please visit our website at www.laticrete.com.au

DISCLAIMER

- The information contained in this document is given in good faith and to the best of our knowledge is true and accurate.
- This information is subject to change without notice and it is the responsibility of the user to obtain up to date and current information.
- The use of this product is beyond our control and LATICRETE is not responsible for any loss or damage arising from the incorrect use of this product.

LATICRETE Australia Pty Ltd

29 Telford Street, Virginia
QLD 4014 Australia

1800 331 012

www.laticrete.com.au