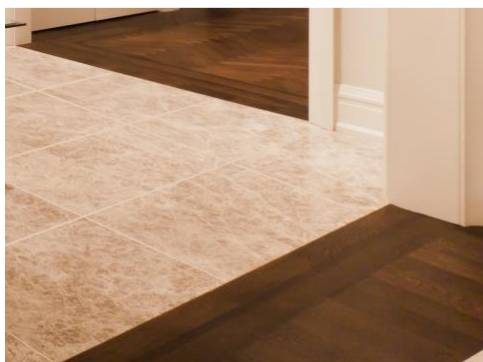




**Globally Proven
Construction Solutions**

STRATA_MAT™

STRATA_MAT™ is a next generation high performance uncoupling mat for use under ceramic tile and stone installations, for both residential and commercial applications. Designed to replace traditional underlayment materials. The unique patent pending design of STRATA_MAT™ provides for an enhanced mechanical bond of the adhesive mortar and provides for faster drying of the mortar, allowing for shorter time to grout. Specifically designed for use with both modified and unmodified mortars, STRATA_MAT™ allows for the proper adhesive mortar to be used with porcelain or large format tiles and stone.



FEATURES/BENEFITS

- Mortar Hydration Vents - creates a mechanical bond between the mat and adhesive mortar - allows the mortar to cure faster providing a stronger bond of tile at 16 – 24 hours for faster time to grout
- Allows for use of the appropriate mortar per industry standards.
- Provides vapor management
- Eliminates transmission of in plane substrate cracks of up to 1/8" (3 mm)
- Instant coverage verification- allows for installer to see mortar coverage underneath the mat during installation without having to lift and verify
- Allows for easier floor layout as chalk lines are easily visible on surface prior to tile installation
- Part of the LATICRETE® Lifetime System Warranty.
- Rated Extra Heavy per ASTM C627 using the thin-bed method
- Rated residential over wood joist or trussed floors when installing tile using a large & heavy tile adhesive mortar (aka medium bed method)
- Rated light over concrete when installing tile using a large & heavy tile adhesive mortar (aka medium bed mortar)
- Lightweight, easy to carry and fast to install with standard tools
- Can be used under moisture sensitive stone
- Suitable for interior non-industrial vehicular traffic applications over concrete substrates

USES

- Interior and exterior
- Uncoupling membranes
- Residential
- Commercial
- Replace traditional underlayment materials

STANDARDS/CERTIFICATIONS



This product has been certified for Low Chemical Emissions (ULCOM/GG UL2818) under the UL GREENGUARD Certification Program. For Chemical Emissions. For Building Materials, Finishes and Furnishings (UL 2818 Standard) by UL Environment.

MANUFACTURER

LATICRETE EUROPE S.R.L.
Via Viazza 1° Tronco nr 19
41043 Formigine (MO) – Italy
Ph. +39 059557680
info@laticreteurope.com

Suitable Substrates

- Concrete
- Mortar Beds
- OSB**
- Exterior Glue Plywood***
- Cement Backer Board
- Cement Terrazzo
- Resilient Flooring**
- Existing Tile Or Stone
- Gypsum Underlayment Or Light Weight Concrete*

* If gypsum or light weight concrete is used follow the manufacturer's recommendation regarding priming and/or special surface preparation before installing STRATA_MAT™

**Interior applications only

*** STRATA_MAT™ Installation Manual DS 010.5

Packaging & Coverage Information

- 323 ft² roll - 45" x 86' (30m² – 1.1m x 26.2m)
- 150 ft² roll – 45" x 40' (13.9m² - 1.1m x 12.2m)

Limitations

- DO NOT bond to particle board, hardwood surfaces, luan or sponge backed vinyl flooring.
- Not for use under Large & Heavy Tile Adhesive Mortar (aka medium-bed mortars) in performance levels with greater than Residential Service requirements.
- For horizontal use over suitable interior or exterior substrates.
- Not for use over expansion joints or structural movement cracks.
- STRATA_MAT™ is not intended for use as a waterproofing membrane.
- Not for wear surface, must be covered with tile.
- Adhesives/mastics, mortars and grouts for ceramic tile, pavers, brick and stone are not replacements for waterproofing membranes. When a waterproofing membrane is required, use a LATICRETE® Waterproofing Membrane (see Section 10 FILING SYSTEMS).
- Minimum of 2" x 2" (50 mm x 50 mm) ceramic, porcelain or glass tile and stone can be set over STRATA_MAT™.
- Do not leave STRATA_MAT™ exposed for more than one week. Cover the STRATA_MAT™ after installing it and protect it from other trades if not setting tile immediately. If the STRATA_MAT is going to be left for more than 72 hours it should be

covered with thin-set and troweled smooth covering the STRATA_MAT™ completely to protect it from potential UV damage and physical abuse.

Note: Surfaces must be structurally sound, stable and rigid enough to support ceramic/stone tile, thin brick and similar finishes. Substrate deflection under all live, dead and impact loads, including concentrated loads, must not exceed L/360 for thin bed ceramic tile/brick installations or L/480 for thin bed stone installations where L=span length.

Cautions

- During cold weather, protect finished work from traffic until fully cured.
- For green marble, resin backed or other moisture sensitive tile or stone, use LATAPOXY® 300 Adhesive, refer to Data Sheet 633.0.
- For white and light-colored marbles use a white LATICRETE® mortar.
- Suitable for exterior applications over concrete for patio, walkways and balconies or terraces over unoccupied space.
- Suitable for interior non-industrial vehicular traffic applications over concrete substrates when using 254 Platinum to adhere STRATA_MAT™ to the concrete and to install tiles over the STRATA_MAT™ following a 7 day cure @ 70°F (21°C).

TECHNICAL DATA

Physical Properties

Tested with 253 Gold

Property	Test Method	Results
Thickness	N/A	1/8" (3 mm)
Point Load	ANSI A118.12 5.2	PASS
Robinson Thin-Bed Floor Test	ASTM C627	Extra Heavy Extra Heavy Extra Heavy
- 16" o.c.		
- 19.2" o.c.		
- 24" o.c.		
Large & Heavy Tile Mortar – Wood Floors(aka medium-bed mortars)		Residential Residential Residential
- 16" o.c.		
- 19.2" o.c.		
- 24" o.c.		
Large & Heavy Tile Mortar (aka medium-bed mortars) over concrete	ASTM C627	Light

Specifications are subject to change without notification.

Technical data shown in product data sheets are typical but reflect laboratory test procedures conducted in laboratory conditions. Actual field performance and test results will depend on installation methods and site conditions

INSTALLATION

Surface Preparation

Concrete Substrates

Concrete must be cured sufficiently to support tile installation traffic as determined by design professional, construction manager, or general contractor. The surface shall be free of voids, sharp protrusions and loose aggregate. All surfaces should be between 40°F (4°C) and 90°F (32°C) and structurally sound, clean and free from all dirt, oil, grease, paint, concrete sealers or curing compounds and cement laitance. Rough or uneven concrete surfaces should be made smooth with a LATICRETE® Latex Portland cement underlayment to provide a wood float or better finish. Do not level with gypsum or asphalt based products.

OSB or Exterior Glue Plywood Substrates

Refer to LATICRETE® Technical Data Sheet 152 "Bonding Ceramic Tile, Stone or Brick Over Wood Floors" (refer to section 10, FILING SYSTEMS).

1. Installer must verify that deflection under all live, dead and impact loads of interior plywood floors does not exceed industry standards of L/360 for ceramic tile and brick or L/480 for stone installations where L span length.
2. Minimum construction for interior ceramic or porcelain tiled floors as follows:
 - For single layer plywood or OSB – 16" (406 mm) o.c. joist spacing – use 5/8" (15 mm) tongue and groove nominal thickness.
 - For single layer plywood or OSB – 19.2 (488 mm) o.c. joist spacing – use 3/4"(19 mm) tongue and groove nominal thickness.
 - For double layer plywood or OSB – 24" (610 mm) o.c joist spacing – use double layer plywood or OSB consisting of minimum subfloor thickness 3/4" (19 mm) nominal thickness, tongue and groove minimum underlayment thickness 3/8" (9 mm) nominal thickness.
3. Minimum construction for interior natural stone tiled floors as follows: Maximum spacing 24" (610 mm) o.c. double layer wood floor consisting of a minimum subfloor thickness 3/4" nominal (19 mm) tongue-and-groove with a minimum underlayment thickness 3/8" nominal (10 mm)

SUBFLOOR: 3/4" (19 mm) thick plywood or OSB, either plain with all sheet edges blocked or tongue and groove, over bridged joists spaced 24" (610

mm) o.c. maximum; fasten plywood every 6" (150 mm) o.c. along sheet ends and 8" (200 mm) o.c. along intermediate supports with 8d ring-shank, coated or hot dip galvanized nails (or screws); allow 1/8" (3 mm) between sheet ends and 1/4" (6 mm) between sheets edges; all sheet ends must be supported by a framing member; glue sheets to joists with construction adhesive.

UNDERLAYMENT: 3/8" (9 mm) thick plugged-faced plywood or OSB fastened every 6" (150 mm) along sheet ends and every 8" (200 mm) in the panel field (both directions) with 8d ring-

shank, coated or hot dip galvanized nails (or screws); allow 1/8" (3 mm) to 1/4" (6 mm) between sheets and 1/4" (6 mm) between sheet edges and any abutting surfaces; offset underlayment joists from joints in subfloor and stagger joints between sheet ends; glue underlayment to subfloor with construction adhesive. Refer to Technical Data Sheet 152 "Requirements for Direct Bonding of Ceramic or Stone Tiles Over Wood Floors" for complete details.

Installation of STRATA_MAT™ to the substrate:

- Install STRATA_MAT™ to the substrate using the appropriate ANSI A118.4, ANSI A118.11 or ANSI A118.15 mortar as outlined by the Tile Council of North America for the applicable installation. Mix the mortar on the loose side but still able to hold a notch to enable complete wetting of the STRATA_MAT™ fleece layer. Using a LATICRETE® polymer modified mortar apply to the substrate in a thin-bed method using a 1/4" (6mm) x 3/16" (5mm) V-notched trowel, being sure to key the mortar into the substrate. Ensure mortar is "wet-out" sufficiently to allow for optimal bedding of STRATA_MAT™. Spread only enough mortar that can be covered with STRATA_MAT™ during the specified open time of the mortar.
- Embed STRATA_MAT™ into the mortar, fabric side down. Using a trowel or screed, apply pressure to ensure proper bedding. Be sure to verify proper coverage beneath the mat. Areas of STRATA_MAT™ embedded properly in the mortar will appear darker than areas not embedded, lift occasionally if necessary to verify coverage. Cut mat to appropriate lengths when approaching walls or other objects, leave approximately 1/4" (6mm) between mat and edge of wall or object for movement.

- Install adjacent sections of STRATA_MAT™ in the same manner, being sure to line edges of each section without leaving any gaps.

Installation of ceramic, porcelain or stone tiles onto STRATA_MAT:

- In accordance with TCNA Handbook for Ceramic Tile Installation and that of porcelain tile manufacturers, LATICRETE® recommends the use of a polymer modified thin set mortar complying with ANSI A118.4 or ANSI A118.15 (e.g. 254 Platinum) when installing porcelain tiles. The unique patent pending design feature of STRATA_MAT™ will provide for enhanced drying of the mortar between the porcelain tile and mat. LATICRETE® recommends the use of a LATICRETE® polymer modified mortar (e.g. 254 Platinum) for all thin-bed method of installations and the appropriate LATICRETE® large and heavy tile adhesive mortar (e.g. TRI_LITE) for Large & Heavy Tile (aka medium-bed method) installations. An unmodified mortar (e.g. 272 Mortar) can be used for applicable installations in accordance with project specifications.
- Installation of the tile finish can begin immediately after embedding STRATA_MAT™ into the bonding mortar. Begin by skimming or filling the surface of STRATA_MAT™ using the flat side of the trowel, ensuring all circles and vents are completely filled. Follow by combing mortar over the mat using a notched trowel that is suitable for the size of tile being installed. Install tiles in accordance with industry guidelines.
- Depending upon adhesive mortar used, tile size, tile type and job site conditions, grouting may be done once mortar has cured enough to allow for light foot traffic – STRATA_MAT™ usually will allow for grouting at 16 – 24 hours.

AVAILABILITY AND COST

Availability

LATICRETE® materials are available worldwide. For distributor information, please contact LATICRETE EUROPE S.r.l. Telephone +39 059557680. For on-line distributor information, visit www.laticrete.com

Cost

Contact a LATICRETE® closer distributor to obtain complete information and cost.

WARRANTY

The supplier warrants that the product will not deteriorate under normal conditions and use. The warranty validity of one (1) year.

Contact Technical Support for further information.

MAINTENANCE

LATICRETE® products are of high quality designed to achieve lasting installations and avoid maintenance, however performance and durability may depend on properly maintaining products, depending of the cleaning products used.

TECHNICAL SERVICES

Technical assistance

For information contact: +39 059557680

info@laticreteurope.com

Technical and safety literature

To obtain technical and safety literature, please visit our website at www.laticrete.com

Warning

The information and the instructions in the data sheet, although based on knowledge gained through years of applications, are indicative. LATICRETE® unable to directly control the installation conditions and modalities of application of products, do not assume any liability arising from their implementation. Those who want to use the LATICRETE® products must conduct adequate tests to determine the site specifications. Results shown are typical but reflect test procedures used. Actual field performance will depend on installation method and site conditions.