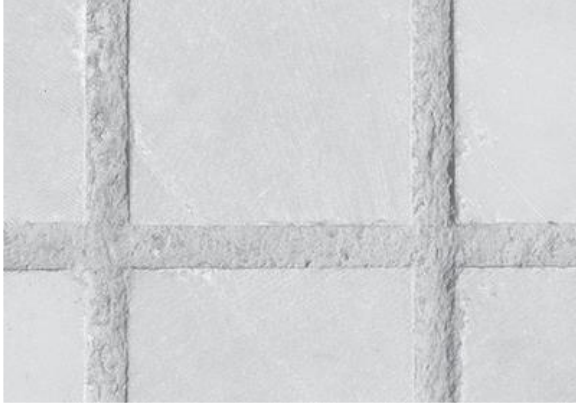




STONETECH® GROUT RELEASE

Pre-apply STONETECH® GROUT RELEASE on stone surfaces to easily remove grout residue surfaces.

**Globally Proven
Construction Solutions**



FEATURES/BENEFITS

- Makes grout installation clean-up easier
- Prevents grout from staining stone
- Water-based formula
- Interior and exterior use

USES

- Countertops
- Backsplashes
- Floors
- Walls

MANUFACTURER

LATICRETE EUROPE S.R.L .
 Via Viazza 1° Tronco nr 19
 41043 Formigine (MO) – Italy
 Ph. +39 059557680
 info@laticreteurope.com

EXPECTED WEAR

Recommended Surfaces

Natural stone, masonry and concrete such as:

- Marble
- Limestone
- Travertine
- Slate
- Sandstone
- Tumbled Stone

Not recommended for use on ceramic and porcelain tile or dense (low absorbency) stone.

Packaging

1 litre bottle, 6 units per Case, 600 units per Pallet

Approximate Coverage

- Up to 157 m²/3.8 L, depending on porosity of surface

Shelf Life

Factory sealed containers of this product are guaranteed to be of first quality for two (2) years if stored at temperatures >50°F (10°C) and <90°F (32°C).

VOC Content

<400 g/L (excluding water) for EPA Purposes

<10 g/L (including water) for U.S. State purposes
(Low Solids Coating)

Cautions

Consult SDS for more safety information.

- Inhalation: Remove victim to fresh air and keep at rest in a position comfortable for breathing. Get medical attention if any discomfort continues.
- Skin contact: Wash skin with soap and water. Get medical attention if symptoms occur.
- Eye contact: Flush eyes thoroughly with water for at least 15 minutes. Get medical attention if symptoms persist.
- Ingestion: Rinse mouth. Do not induce vomiting. Get medical attention if any discomfort continues.

Storage and Handling Instructions

MAY BE HARMFUL IF SWALLOWED. MAY CAUSE RESPIRATORY IRRITATION. Do not ingest. Avoid contact with eyes and skin. Avoid prolonged exposure to vapors. Use in a well-ventilated area. KEEP OUT OF THE REACH OF CHILDREN. Do not freeze or store above 100 °F/ (38 °C). Do not mix with other chemicals.

TECHNICAL DATA**Physical Properties**

Form	Liquid
Color	Colorless
Odor	Odorless
pH	12
Flash Point	> 110.0 °C Closed Cup

Working Properties

Full Cure	4 hours prior to grouting
-----------	---------------------------

Specifications subject to change without notification. Results shown are typical but reflect test procedures used. Actual field performance will depend on installation methods and site conditions.

INSTALLATION**Surface Preparation**

Read entire label before using. Use only as directed. Always test in a small inconspicuous area to determine ease of application and desired results. Make sure surface is clean, dry and free of loose debris. Surface temperature should be between 50-80°F (10 – 26°C). Avoid skin and eye contact. Wear protective eyewear, gloves, long sleeves, and long pants while handling product. Ensure work area is well-ventilated during application and until surface is dry. Keep children and pets out of the area until surface use resumes.

Directions

1. Mask off any surfaces not intended to be treated.
2. Apply an even coat of STONETECH® GROUT RELEASE with a paint pad, paintbrush, paint roller or low-pressure sprayer.
3. Allow STONETECH® GROUT RELEASE to completely penetrate the surface for 5-15 minutes.
4. Wipe up all remaining grout release from the surface. Do not allow excess liquid to pool or dry on surface. Do not over apply.
5. Allow for a minimum of 4 hours cure time prior to grouting.
6. After grouting, remove excess grout. Do not allow grout to completely dry prior to removal.
7. Clean equipment with water.
8. Once grout is fully cured seal installation with an appropriate STONETECH® sealer. Follow grout manufacturer's directions for cure time.

Cleaning

Clean tools used during application with water.

AVAILABILITY AND COST

Availability

LATICRETE® materials are available worldwide. For distributor information, please contact LATICRETE EUROPE S.r.l. Telephone +39 059557680. For on-line distributor information, visit www.laticrete.eu

Cost

Contact a LATICRETE® closer distributor to obtain complete information and cost.

directly control the installation conditions and modalities of application of products, do not assume any liability arising from their implementation. Those who want to use the LATICRETE® products must conduct adequate tests to determine the site specifications. Results shown are typical but reflect test procedures used. Actual field performance will depend on installation method and site conditions.

WARRANTY

The supplier warrants that the product will not deteriorate under normal conditions and use. The warranty validity of one (1) year.

Contact Technical Support for further information.

MAINTENANCE

LATICRETE® products are of high quality designed to achieve lasting installations and avoid maintenance, however performance and durability may depend on properly maintaining products, depending of the cleaning products used.

TECHNICAL SERVICES

Technical assistance

For information contact: +39 059557680

info@laticreteurope.com

Technical and safety literature

To obtain technical and safety literature, please visit our website at www.laticrete.eu

Warning

The information and the instructions in the data sheet, although based on knowledge gained through years of applications, are indicative. LATICRETE® unable to