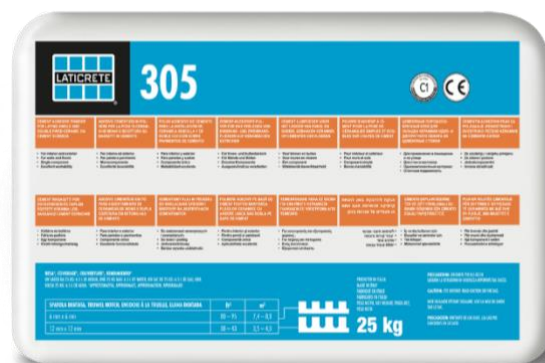
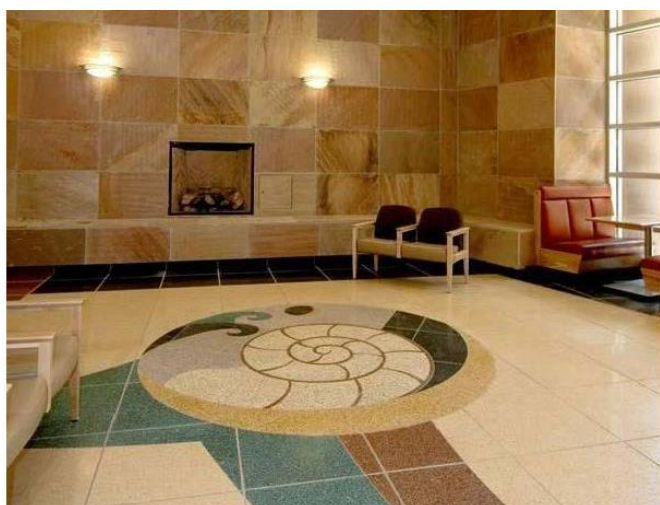




# 305

Powder cement adhesive powder for the installation of ceramic tile

Globally Proven  
Construction Solutions



## FEATURES/BENEFITS

- Single component
- Excellent workability
- Ultra-White

## USES

- Indoor installation of ceramic tiles for floors and walls
- On standard plastered or cement based mortar walls
- On cement screeds, as long as they are well set and dry

## MANUFACTURER

LATICRETE® EUROPE S.r.l.  
Via Borgogna, 8 – 20122  
MILANO - ITALIA

Telefono +39 059 557680  
Email: [info@laticreteeuropa.com](mailto:info@laticreteeuropa.com)

[www.laticrete.eu](http://www.laticrete.eu)

## STANDARDS/CERTIFICATIONS

CE

EN12004 C1

**Color**

White and grey powder

**Packaging**

25 kg bag

**Pallet**

1200 kg

**Consumption**

From 2.5 a 5 kg/m<sup>2</sup>

**Shelf Life**

305 can be stored for up to 12 months if maintained in a dry place and in its original packaging.

**Quality and Environmental Standards**

305 undergoes constant, careful testing at our laboratories, in compliance with the legislation in force - UNI EN ISO 9001/2000.

**Limitations**

- Do not use for installing non-absorbent and large-size tiles.
- Do not use for installing glass mosaic tiles.
- Do not use on heated screeds.
- Do not use on prefabricated or cast-in-situ concrete constructions.
- On gypsum or anhydrite and extremely absorbent bases, use PRIMER PLUS beforehand.
- Do not use where it is necessary an adhesive layer over 5 mm thick.
- Do not use where quick walkability is required.
- Do not apply on wood, iron or rubber.

**TECHNICAL DATA**

Technical and application specifications	
Hazard classification as per Directive 99/45/EC:	grey: irritant - white: none
Mixing water:	23-25% (weight) - i.e. approx 6 l per 25 kg bag
Specific weight of mixture:	1.40 g/cm <sup>3</sup>
Mixture pH:	over 12
Pot Life:	6/8 hours
Application temperature:	from +5°C to +35°C
Open time (according to EN 1346):	approx. 20 minutes
Handling time:	approx. 45 minutes
Waiting time for grouting on walls:	approx. 3/6 hours (depending on the absorption)
Waiting time for grouting on floors:	approx. 24 hours
Walk-over time:	24 hours
Ready for use:	approx. 14 days

FINAL PERFORMANCE SPECIFICATIONS EN 1348 (N/mm <sup>2</sup> )	
Initial adhesion (after 28 days):	approx. 1.00 N/mm <sup>2</sup>
Adhesion after immersion in water:	approx. 0.70 N/mm <sup>2</sup>
Adhesion after freeze-thaw cycles:	approx. 0.90 N/mm <sup>2</sup>
Adhesion after heat action:	approx. 0.60 N/mm <sup>2</sup>
Resistance to acids and alkalis:	poor
Resistance to damp, solvent, oil, and ageing:	excellent
Temperature resistance:	from -30°C to +90°C
Deformability:	none
Harmonised custom code:	38245090

Technical data was taken at 23°C/50% Residual Humidity and no ventilation. The data may be considerably modified by the application conditions, and method used.

## INSTALLATION

### Surface Preparation

All surfaces must be flat, structurally sound, and compact, have no parts coming away, and be free of dust, grease, oil, paint, and wax; it must also be dry and well set. Protect the installation surface from direct sunlight beforehand. When the temperature is above +25°C, we recommend you dampen the surfaces which are dry and dusty beforehand to extend the open time of the adhesive.

### Application

Mix 305 with clean water, to obtain a smooth, lump-free mixture; do not add other aggregates or hydraulic binders to 305. Leave the mix to rest for 5 minutes, and then mix again for a short while before application. If the mixture is already hardening, do not attempt to restore workability by adding water. Spread the mixture over the base, first with the flat side of the trowel and then with the notched side. Use the proper sized notched trowel to ensure the adhesive adheres to the back of the tile, covering at least 70% of the surface area for indoor installations and 100% if the installations are outdoors or in areas subject to heavy traffic. For outdoors applications or in areas subject to particular mechanical strains, the adhesive must be spread over both the substrate and the back of the tile, to ensure there are no gaps in the layer of glue (double spreading method).

The materials applied with 305 must be protected from the rain during the 24 hours following the installation and must not be exposed to freezing temperatures for the first 5 days.

## AVAILABILITY AND COST

### Availability

LATICRETE® AND LATAPOXY® materials are available worldwide. For distributor information, please contact LATICRETE® EUROPE S.r.l. Telephone +39 059 557680. For on-line distributor information, visit [www.laticrete.eu](http://www.laticrete.eu)

### Cost

Contact a LATICRETE® and LATAPOXY® closer distributor to obtain complete information and cost.

## WARRANTY

The supplier warrants that the product will not deteriorate under normal conditions and use. The warranty validity of one (1) year. Contact Technical Support for further information.

## MAINTENANCE

LATICRETE® and LATAPOXY® are products of high quality designed to achieve lasting installations and avoid maintenance, however performance and durability may depend on properly maintaining products, depending of the cleaning products used.

## TECHNICAL SERVICE

### Technical assistance

For information contact: +39 059 557680

[info@laticreteurope.com](mailto:info@laticreteurope.com)

### Technical and safety literature

To obtain technical and safety literature, please visit our website at [www.laticrete.eu](http://www.laticrete.eu)

### Warning

The information and the instructions in the data sheet, although based on knowledge gained through years of applications, are indicative. LATICRETE® unable to directly control the installation conditions and modalities of application of products, do not assume any liability arising from their implementation. Those who want to use the LATICRETE® products must conduct adequate tests to determine the site specifications. Results shown are typical but reflect test procedures used. Actual field performance will depend on installation method and site conditions.