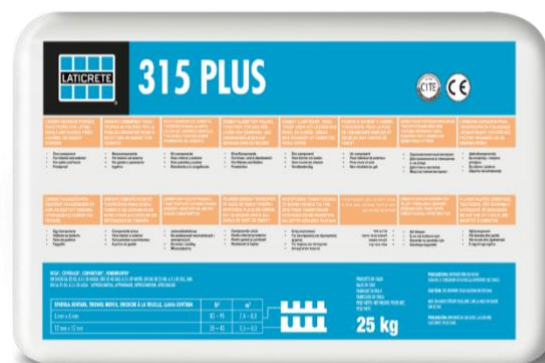
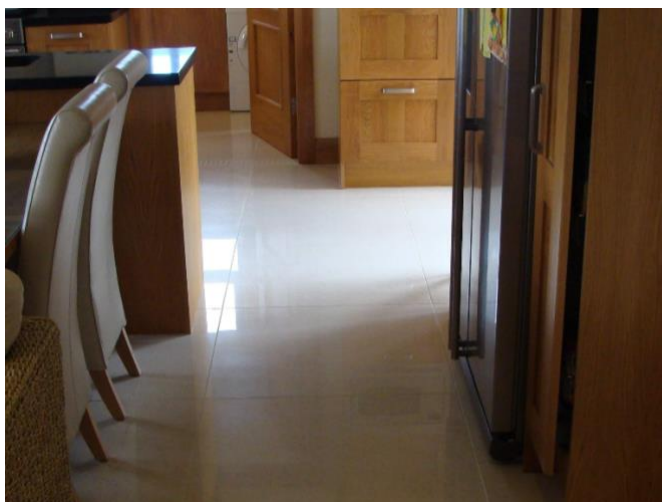




315 PLUS

Cement based adhesive powder for installing ceramic tile in interior and exterior

Globally Proven
Construction Solutions



FEATURES/BENEFITS

- Single component
- Excellent workability
- Frost resistant

USES

- Indoor and outdoor installation for any type of tiles, including ceramic mosaic tiles for floors and walls
- Spot installation of insulating materials such as polystyrene, rock or glass wool, polyurethane foam
- On standard plastered or cement based mortar walls
- On cement screeds, as long as they are well set and dry

MANUFACTURER

LATICRETE® EUROPE S.r.l.
Via Borgogna, 8 – 20122
MILANO - ITALIA

Telefono +39 059 557680
Email: info@laticreteeuropa.com

www.laticrete.eu

STANDARDS/CERTIFICATIONS



EN12004 C1

Color

White and grey powder

Packaging

25 kg bag

Pallet

1200 kg

Consumption

From 2.5 a 5 kg/m²

Shelf life

315 PLUS can be stored for up to 12 months if maintained in a dry place and in its original packaging.

Quality and Environmental Standards

315 PLUS undergoes constant, careful testing at our laboratories, in compliance with the legislation in force - UNI EN ISO 9001/2000.

Limitations

- Do not use for installing non-absorbent tiles, such as porcelain stoneware.
- Do not use for installing glass mosaic tiles or similar tiles.
- Do not use for installing large-size tiles.
- Do not use on heated screeds.
- Do not use on prefabricated or cast-in-situ concrete constructions.
- Do not use for swimming pools or external walls
- On gypsum or anhydrite and extremely absorbent bases, use Primer P beforehand.
- Do not use where it is necessary an adhesive layer over 5 mm thick.
- Do not use on wooden bases or plasterboard walls.
- Do not use on metal, rubber, PVC or linoleum surfaces.
- Do not use to install new materials on top of existing materials or on surfaces where quick walkability is required.

TECHNICAL SPECIFICATIONS

Technical and application specifications	
Hazard classification as per Directive 99/45/EC:	grey: irritant - white: none
Mixing water:	24-27% of weight (approx 6 l per 25 kg bag)
Specific weight of mixture:	1.30 g/cm ³
Mixture pH:	13
Pot Life:	over 8 hours
Application temperature:	from +5°C to +35°C
Open time (according to EN 1346):	approx. 20 minutes
Handling time:	approx. 45 minutes
Waiting time for grouting on walls:	approx. 4/8 hours (depending on the absorption)
Waiting time for grouting on floors:	approx. 24 hours
Walk-over time:	24 hours
Ready for use:	approx. 14 days

FINAL PERFORMANCE SPECIFICATIONS EN 1348 (N/mm²)

Initial adhesion (after 28 days):	approx. 1.30 N/mm ²
Adhesion after immersion in water:	approx. 1.00 N/mm ²
Adhesion after freeze-thaw cycles:	approx. 1.00 N/mm ²
Adhesion after heat action:	approx. 0.90 N/mm ²
Acid resistance:	poor
Resistance to damp, solvent, oil, and ageing:	excellent
Temperature resistance:	from -30°C to +90°C
Deformability:	none
Harmonised custom code:	38245090

Technical data was taken at 23°C/50% Residual Humidity and no ventilation. The data may be considerably modified by the application conditions and method used.

INSTALLATION

Surface Preparation

All surfaces must be flat, structurally sound, and compact, have no parts coming away, and be free of dust, grease, oil, paint, and wax; it must also be dry and well set. Protect the installation surface from direct sunlight beforehand. When the temperature is above +25°C, we recommend you dampen the surfaces which are dry and dusty beforehand to extend the open time of the adhesive.

Application

Mix 315 PLUS with clean water, to obtain a smooth, lump-free mixture. Leave the mix to rest for 5 minutes and then mix again for a short while before application. Do not add other aggregates or hydraulic binders to 315 PLUS. If the mixture is already hardening, do not attempt to restore workability by adding water. Spread the mixture over the base, first with the flat side of the trowel and then with the notched side. Use the proper sized notched trowel to ensure the adhesive adheres to the back of the tile, covering at least 70% of the surface area for indoor installations and 100% if outdoors installations or in areas subject to heavy traffic.

For applications in areas exposed to freezing temperatures or subject to particular mechanical strains (outdoors, paving/flooring subject to heavy loads, flooring that needs to be polished once laid), the adhesive must be spread over both the substrate and the back of the tile (double spreading method). The materials applied with 315 PLUS must be protected from the rain during the 24 hours following the installation and must not be exposed to freezing temperatures for the first 5 days.

AVAILABILITY AND COST

Availability

LATICRETE® AND LATAPOXY® materials are available worldwide. For distributor information, please contact LATICRETE® EUROPE S.r.l. Telephone +39 059 557680. For on-line distributor information, visit www.laticrete.eu

Cost

Contact a LATICRETE® and LATAPOXY® closer distributor to obtain complete information and cost.

WARRANTY

The supplier warrants that the product will not deteriorate under normal conditions and use. The warranty validity of one (1) year. Contact Technical Support for further information.

MAINTENANCE

LATICRETE® and LATAPOXY® are products of high quality designed to achieve lasting installations and avoid maintenance, however performance and durability may depend on properly maintaining products, depending of the cleaning products used.

TECHNICAL SERVICE

Technical assistance

For information contact: +39 059 557680
info@laticreteurope.com

Technical and safety literature

To obtain technical and safety literature, please visit our website at www.laticrete.eu

Warning

The information and the instructions in the data sheet, although based on knowledge gained through years of applications, are indicative. LATICRETE® unable to directly control the installation conditions and modalities of application of products, do not assume any liability arising from their implementation. Those who want to use the LATICRETE® products must conduct adequate tests to determine the site specifications. Results shown are typical but reflect test procedures used. Actual field performance will depend on installation method and site conditions.