



High Performance Flooring Solutions



- Worldwide Availability
- Industry Standard
- On-Site Technical Service
- Systems Warranties

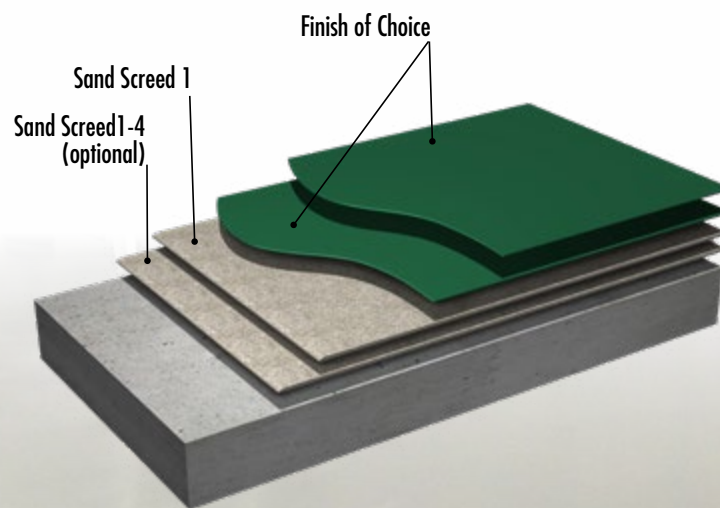
© Miro Martins

Globally Proven Construction Solutions

TABLE OF CONTENTS

LATICRETE® MODULAR TECHNOLOGY	3
YOUR SINGLE SOURCE FOR COMPLETE BUILDING SYSTEM SOLUTIONS	4-5
LATICRETE GUARD	6-7
LATICRETE BUILD.....	8-9
LATICRETE QUARTZ	10-11
LATICRETE FLAKE.....	12-13
LATICRETE FLOW.....	14-15
LATICRETE MORTAR	16-17
LATICRETE TERRAZZO	18-19
LATICRETE METALLIC	20-21
LATICRETE ESD	22-23
LATICRETE DECK.....	24-25
LATICRETE STAIN	26-27
LATICRETE SEAL	28-29
COMPLIMENTARY PRODUCTS	30-31

The LATICRETE® Modular System is a method of building a multi-layer resinous floor, which results in ultimate versatility and customizability, yielding benefits to applicator and end user alike. The modular system consists of one or two base coats of LATICRETE Sand Screed followed by the desired finish. The Sand Screed comes in four sizes and permits customization of the thickness to between one and four millimeters, increasing impact resistance and durability with thickness. The Sand Screed has the added benefit of controlling the material coverage, resulting in a floor with improved flatness that comes in on budget as no excess material can be used.



For over 60 years, LATICRETE® has led the industry with pioneering advancements—developing high-performance building materials for national account partners, architects and construction professionals worldwide. From time-tested to innovative, our broad product portfolio provides superior quality and value. We are fully committed to innovation, growth, and a complete system approach.

Flooring Systems

The LATICRETE High Performance Flooring solutions comprise a complete range of systems, both industrial and decorative, designed with the breadth and versatility to accommodate most any flooring demand.

Our resinous flooring systems offer an unparalleled selection of chemistries and finishes to choose from. From a clear sealer for a warehouse, to epoxy terrazzo for an airport, urethane cement for a brewery floor, single day return-to-service polyaspartics, our resinous floors allow you to deliver extremely durable and aesthetic floors that are safe, easy to maintain, and add value to the customer's operation.

In addition to our resinous flooring systems, LATICRETE offers a full range of construction chemicals to extend the life and improve the look of any concrete floor. With our polished concrete densifiers and dyes you can construct a beautiful looking floor with a range of design options that is easy to maintain and lasts much longer than an untreated concrete slab.

Our complete line of self leveling underlayments and overlayments allow you to quickly and easily prepare a poorly finished concrete slab to receive future floor goods, or deliver super flat floors for areas which require extreme flatness specifications. Our decorative self leveling overlayments can be polished and seeded with aggregates to provide a fast and cost effective alternative to cement terrazzo in commercial or retail environments.

LATICRETE® SUPERCAP®

The LATICRETE® SUPERCAP® System is a time-saving, cost-effective method for finishing new concrete or capping existing slabs by combining a LEED-contributing, UL GREENGUARD Gold Certified, low-alkali, self-leveling, cement-based technology with a patented computer-controlled mobile blending unit (pump truck).

This proven Lean tool provides benefits right from the start of concrete placement in division 3 and flows through to division 9. With the ability to blend 30,000 pounds (13,608 kg) per hour and deliver material up to 50 stories high, this revolutionary system benefits the entire project by providing predictable results that save time and money, and while improving overall quality.



Tile & Stone Installation

Ensure a successful installation each and every time with the most comprehensive assortment of innovative tile and stone installation materials available worldwide. LATICRETE® industry-leading products provide complete system solutions from the substrate up through the grout for virtually any type of tile or stone installation in commercial, industrial, and residential applications.

Product categories include surface preparation, waterproofing, sound control, anti-fracture, adhesives, grouts, sealers and cleaners, and shower system components—all designed to work together, providing a comprehensive installation.

Floor and Stone Care Products

Untreated tile, stone, and concrete surfaces all possess a certain degree of porosity which over time will absorb any contaminant with which they come in contact, ultimately leading to a stained and worn looking floor. LATICRETE's floor and stone care products comprise a wide array of water-based or solvent-based sealers, both penetrating and topical, to Protect, Clean, or Transform any floor depending on surface type, porosity, and desired finish and performance level.

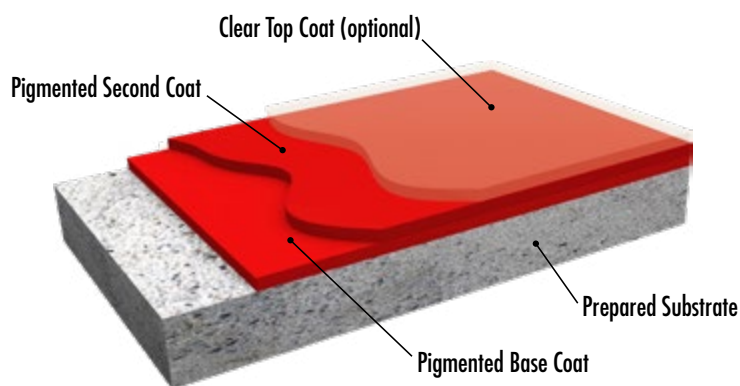
A solid color, thin-build, floor coating designed to provide a durable, rapid return-to-service floor with a high degree of customization in terms of thickness, texture, and chemistry.

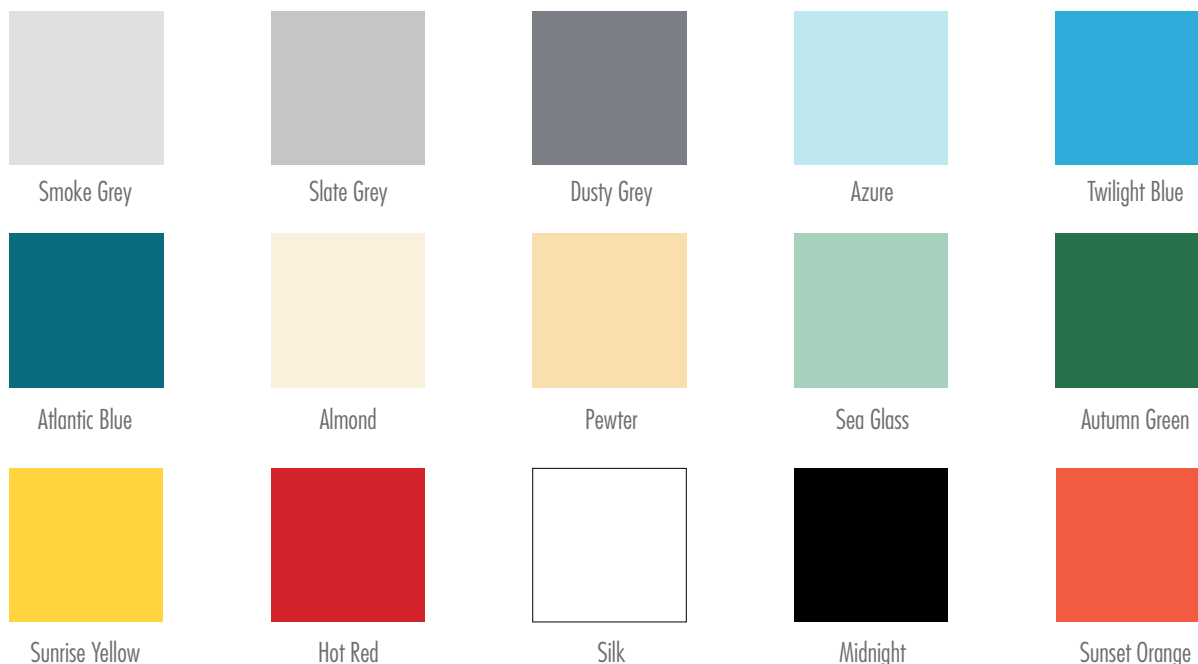
System Features and Benefits

- Great for area demarcation
- High abrasion and chemical resistance
- 1 day return option
- Customizable traction finish
- UV Stable available
- Easy maintenance
- Superior substrate adhesion
- VOC-free available

Recommended Applications

- | | | |
|--------------------|-----------------------------|----------------|
| ▪ Airplane hangars | ▪ Car dealership | ▪ Laboratories |
| ▪ Shop floors | ▪ Manufacturing | ▪ Retail |
| ▪ Warehouses | ▪ Parking decks and garages | |





System Variations	Applications
GUARD EP	Standard all epoxy thin system. Highest value/cost ratio. Interior, medium traffic, commercial/ light industrial. Variable traction and finish shine.
GUARD EPU	PU topcoat. UV Stable. Added abrasion resistance. Exterior, high traffic commercial/ light industrial.
GUARD PA	100 percent polyaspartic system. Single day install and next day return to service. UV stable. High chemical resistance. Ideal for renovation and when minimizing.
GUARD PA PURE	100 percent polyaspartic system with zero VOC. For occupied ares, interior installations where speed is critical, and projects looking to earn environmental ratings.

Cured System Properties	Value *	Methods
Density	1,5 ± 0,05 (g/cm3)	ASTM D 1475
Compressive Strength	8874 psi	ASTM D 695/C 579
Substrate Adhesion	514 psi	ASTM D 4541
Abrasion Resistance	0,15 g	Taber CS 17-ASTM D 4060
Continuous heat exposure	<60° C	
Intermittent heat exposure	<90° C	

*These values are the averages of all standard thicknesses

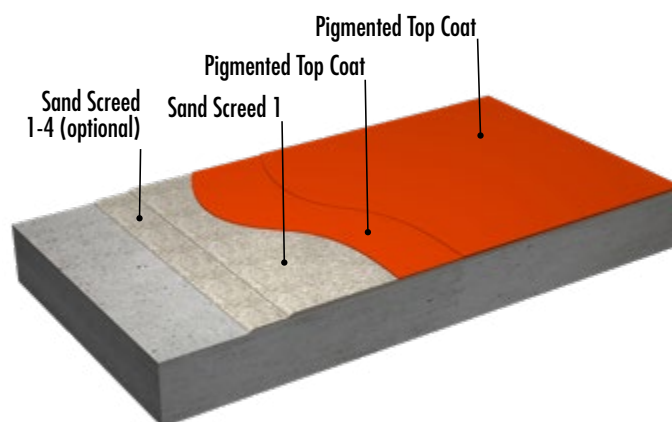
A solid color, multi-layer, high-traffic flooring solution designed to provide maximum durability along with utmost customizability to perfectly suit most industrial and commercial requirements.

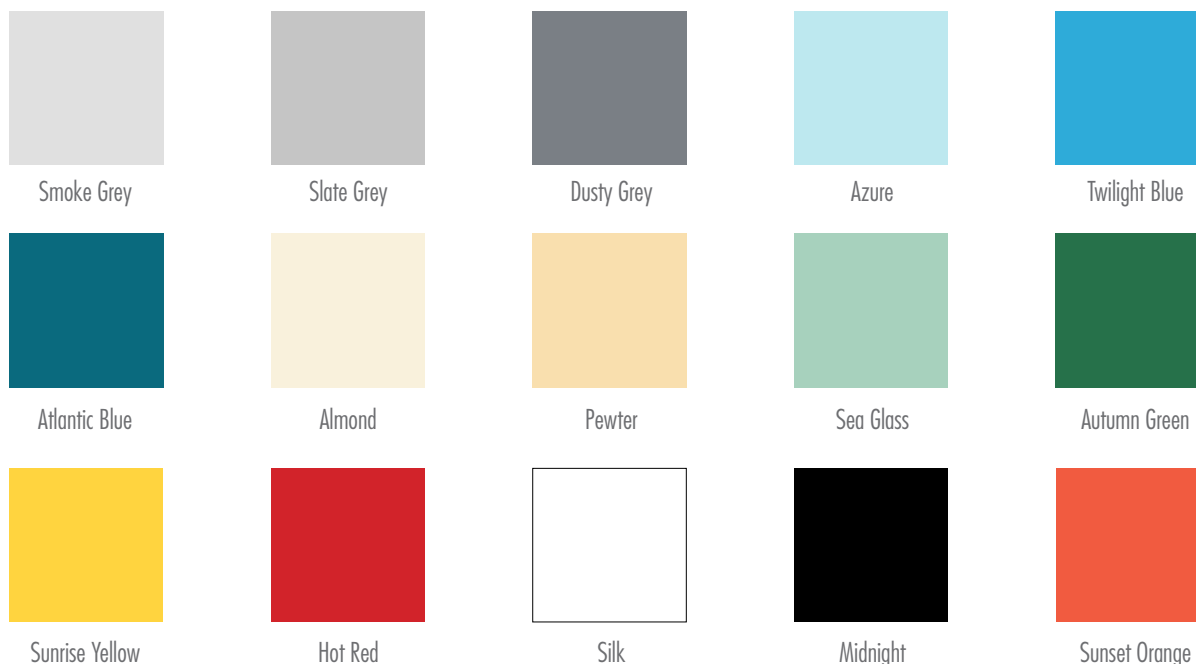
System Features and Benefits

- Ultimate customizability
- High abrasion and chemical resistance
- Customizable thickness (1-4mm) available
- Customizable traction available
- UV stable available
- Simple maintenance
- Superior substrate adhesion
- Integral sanitary cove

Recommended Applications

- Food and beverage industry
- Automotive industry
- Parking decks and garages
- Offices
- Industrial manufacturing
- Laboratories
- Health care
- Commercial kitchens





NOTE — UT version has restricted color table

System Variations	Applications
BUILD EP	Standard all epoxy system. Highest value/cost ratio. Interior, medium traffic, commercial/industrial.
BUILD EPU	PU topcoat. UV Stable. Added abrasion resistance. Exterior, high traffic industrial. PU provides more matte finish.
BUILD UT	Urethane Cement. Safe for thermal shock. Moisture tolerant. Interior, high impact, food production.
BUILD PA	Polyaspartic Topcoat. Very fast turn around. UV stable. High chemical resistance. Ideal for renovation and when minimizing.

Cured System Properties	Value *	Methods
Density	1,7 ± 0,05 (g/cm ³)	ASTM D 1475
Compressive Strength	11457 psi	ASTM D 695/C 579
Flexural Strength	3770 psi	ASTM D 790/C 580
Abrasion Resistance	0,15 g	ASTM D 4060
Substrate Adhesion	435 psi	ASTM D 4541
Elastic Modulus	1885.000 psi	ASTM D 695

*These values are the averages of all standard thicknesses

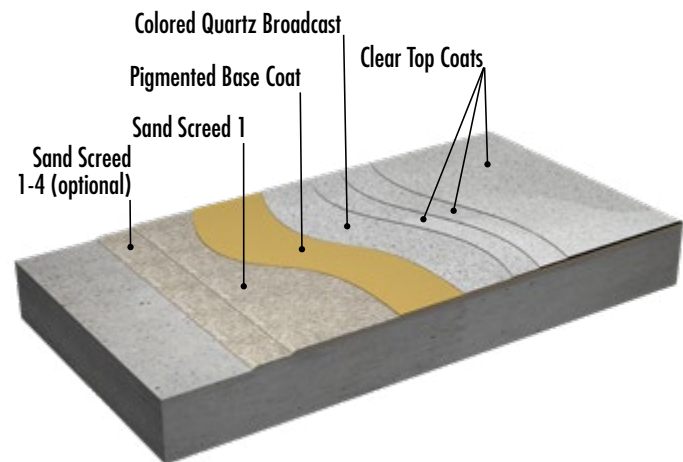
A colored quartz flooring system designed to provide an aesthetic, durable, and sanitary flooring solution for high traffic and aseptic areas. Variable thicknesses, resin types, and colors allow for high customizability.

System Features and Benefits

- Ultimate customizability
- High abrasion, impact, and chemical resistance
- Customizable thickness (1-4mm) available
- Customizable traction available
- UV stable available
- Simple maintenance
- High gloss or matte finish
- Integral sanitary cove

Recommended Applications

- Parking garages
- Commercial kitchens
- Exterior walkways
- Pharmaceutical and cosmetics industry
- Laboratories
- Restrooms
- Locker rooms
- Veterinarian clinics

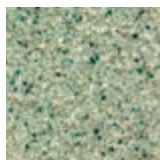




Granite



Brook



Seaglass



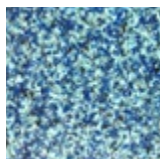
Atlantic



Comet



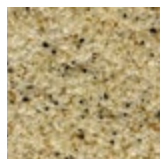
Wheat Field



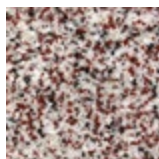
Caribbean



Mossy Grove



Coral Beach



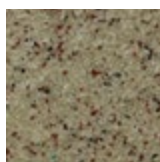
Garnet Red



Salmon



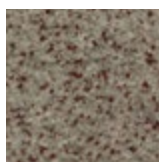
Almond



Sardinia



Topaz



Slate

System Variations	Applications
QUARTZ EP	Standard all epoxy system. Highest value/cost ratio. Interior, medium traffic, commercial/industrial. Brilliant shine finish.
QUARTZ EPU	Clear PU topcoat. Clear PU topcoat provides higher chemical, abrasion, and scratch resistance with a matte finish.
QUARTZ PA	Polyaspartic Topcoats. Very fast turn around. UV stable. High chemical resistance. Ideal for when minimizing downtime is of the essence.
QUARTZ PA PURE	Polyaspartic Topcoats. VOC free polyaspartic for occupied spaces and interiors where solvents and fumes are not permitted. UV stable, increased chemical and abrasion resistance.

Cured System Properties	Value *	Methods
Compressive Strength	11457 psi	ASTM D 695/C579
Flexural Strength	3770 psi	ASTM D 790/C580
Abrasion Resistance	0,10 g	ASTM D 4060
Substrate Adhesion	435 psi	ASTM D 4541
Elastic Modulus	1885.000 psi	ASTM D 695
Coef. Thermal expansion	45 x 10E-5oC	ASTM D 696

*These values are the averages of all standard thicknesses



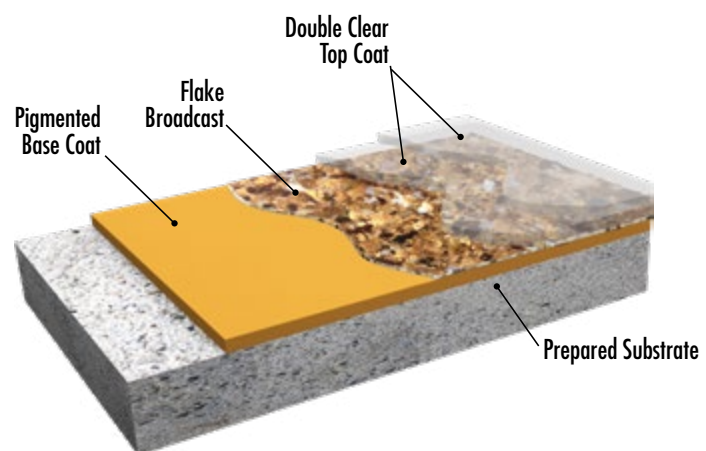
A multi-coat broadcast flake resinous coating system designed to provide a capable, terrazzo-like seamless flooring finish. Available in standard as well as mica-chip blends.

System Features and Benefits

- Many blends and finishes
- High abrasion and chemical resistance
- No hot tire pickup
- Vertical application
- Interior/exterior applications
- Rapid install
- Superior substrate adhesion
- High shine or matte finish

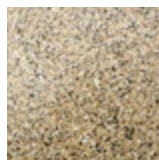
Recommended Applications

- | | | |
|----------------|---------------|-----------------------|
| ▪ Schools | ▪ Residential | ▪ Laboratories |
| ▪ Supermarkets | ▪ Offices | ▪ Commercial kitchens |
| ▪ Health care | ▪ Retail | |

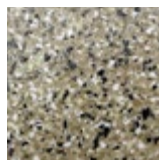




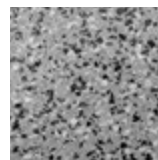
Copper Mountain
6 mm



Copper Mountain
3 mm



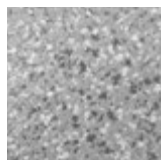
Desert Storm
6 mm



Granite
6 mm



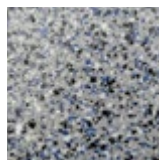
Black Canyon
3 mm



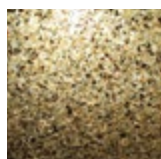
Salt and Pepper
6 mm



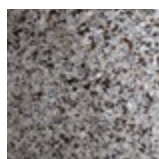
Red Rocks
6 mm



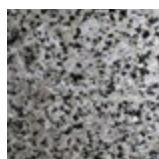
Midnight Blue
6 mm



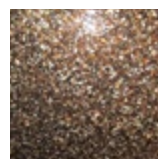
Antique Gold Mica



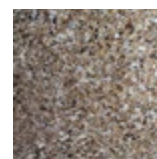
Freestone Mica



Glacier Mica



Beechnut Mica



Copper River Mica

System Variations	Applications
FLAKE EP	Standard all epoxy system. Highest value/cost ratio. Interior, medium traffic, commercial/industrial. Brilliant finish.
MICA FLAKE EP	Mica flakes add a supremely aesthetic shine from use of mineral flakes.
FLAKE EPU	Polyurethane top-coat provides extra resistance to impact, abrasion, UV resistance, as well as a matte finish.
BUILD PA	Polyaspartic Topcoat. Fast turn around. UV stable. High chemical resistance. Renovation, where minimizing downtime is of the essence.

Cured System Properties	Value *	Methods
Compressive Strength	11457 psi	ASTM D695/C 579
Flexural Strength	3770 psi	ASTM D790/ C 580
Abrasion Resistance	0,10 g	ASTM D 4060
Substrate Adhesion	435 psi	ASTM D 4541
Elastic Modulus w	1885.000 psi	ASTM D 695
Coef. Thermal Expansion	45 x 10E-5oC	ASTM D 696

*These values are the averages of all standard thicknesses

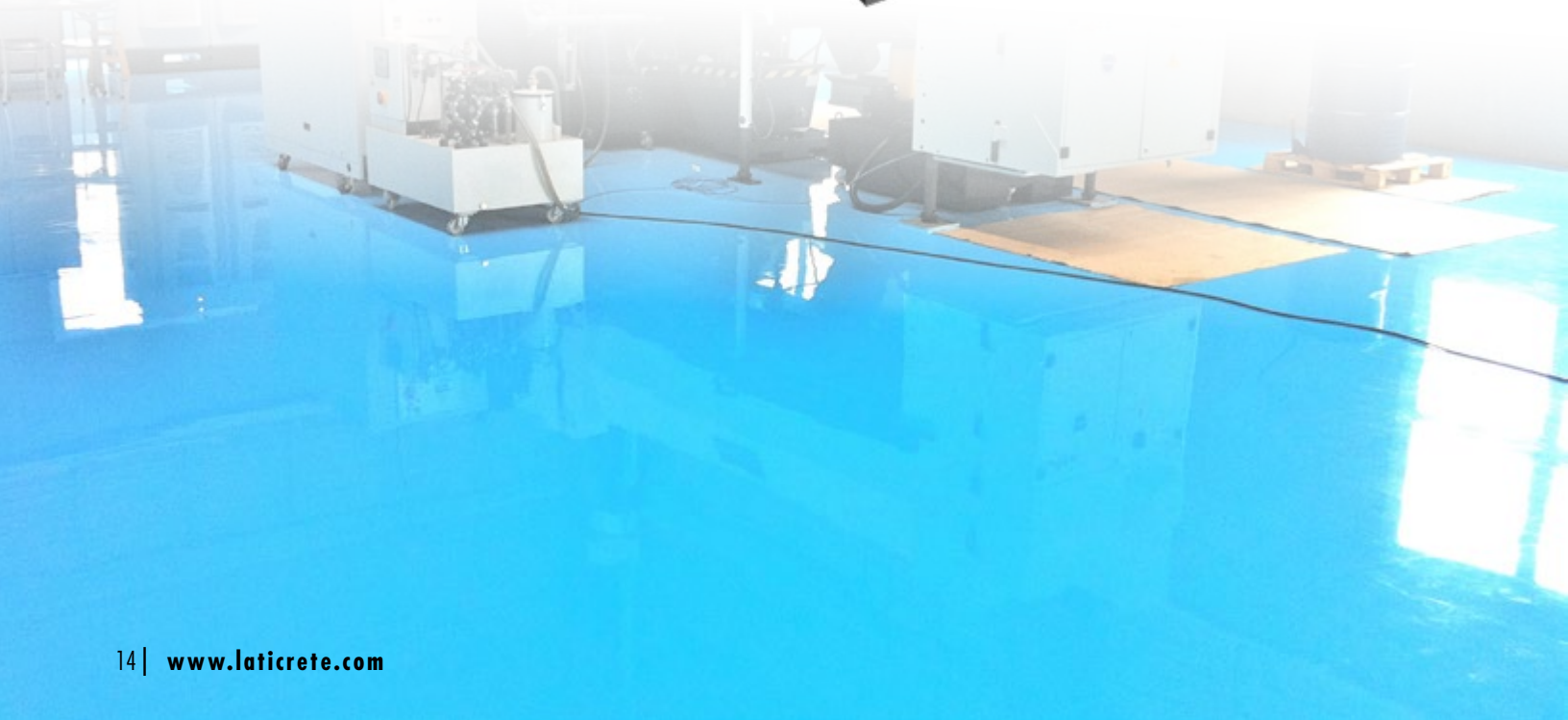
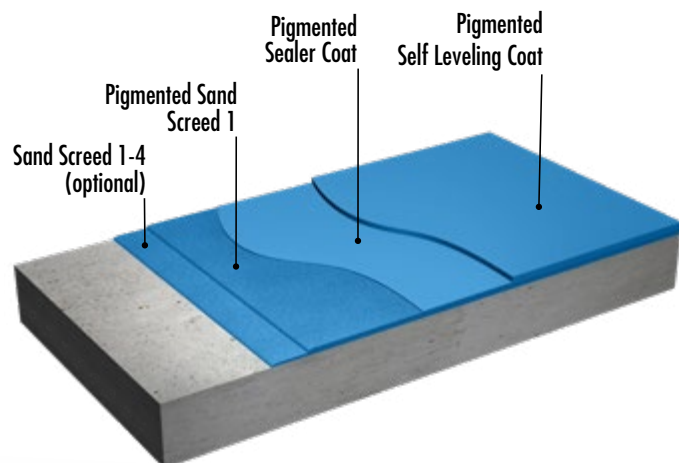
A solid-color, self-leveling, high-strength flooring solution designed to provide a mirror-flat surface for high chemical resistance and ease of maintenance.

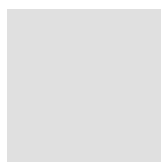
System Features and Benefits

- Superior flatness
- High chemical resistance
- Rapid application
- Customizeable thickness (1-4mm) available
- Thermal shock resistance (UT)
- UV stable available
- Easy maintenance
- High compressive strength

Recommended Applications

- | | | |
|--------------------------------|----------------------------|-----------------------------|
| ■ Pharmaceutical industry | ■ Automotive industry | ■ Electronics manufacturing |
| ■ Food and beverage production | ■ Industrial manufacturing | ■ Laboratories |
| ■ Health care | ■ Restrooms | ■ Show rooms |





Smoke Grey



Slate Grey



Dusty Grey



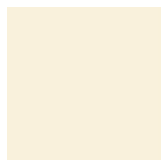
Azure



Twilight Blue



Atlantic Blue



Almond



Pewter



Sea Glass



Autumn Green



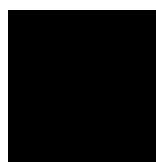
Sunrise Yellow



Hot Red



Silk



Midnight



Sunset Orange

System Variations	Applications
FLOW EP	Standard all epoxy self-leveling system. Highest value/cost ratio. Brilliant matte finish. Easy, fast application.
FLOW EPU	PU topcoat. UV Stable. Added abrasion resistance. Exterior/Interior. PU provides a matte finish.
FLOW UT	Urethane Cement. Use when need thermal shock resistance for wet areas. Interior, high impact, food production, matte finish.
FLOW UPA	Polyaspartic topcoat on urethane cement self-leveling base. Increased UV, chemical, and abrasion resistance.

Cured System Properties	Value*	Methods
Tensile Strength	2813 psi	ASTM C 307
Compressive Strength	7860 psi	ASTM C 579
Coef. Thermal Expansion	60x105 oC	ASTM D 696
Abrasion Resistance	0,10 g	ASTM D 4060
Substrate Adhesion	456 psi	ASTM D 4541
Elastic Modulus	1885.000 psi	ASTM D 695

*These values are the averages of all standard thicknesses

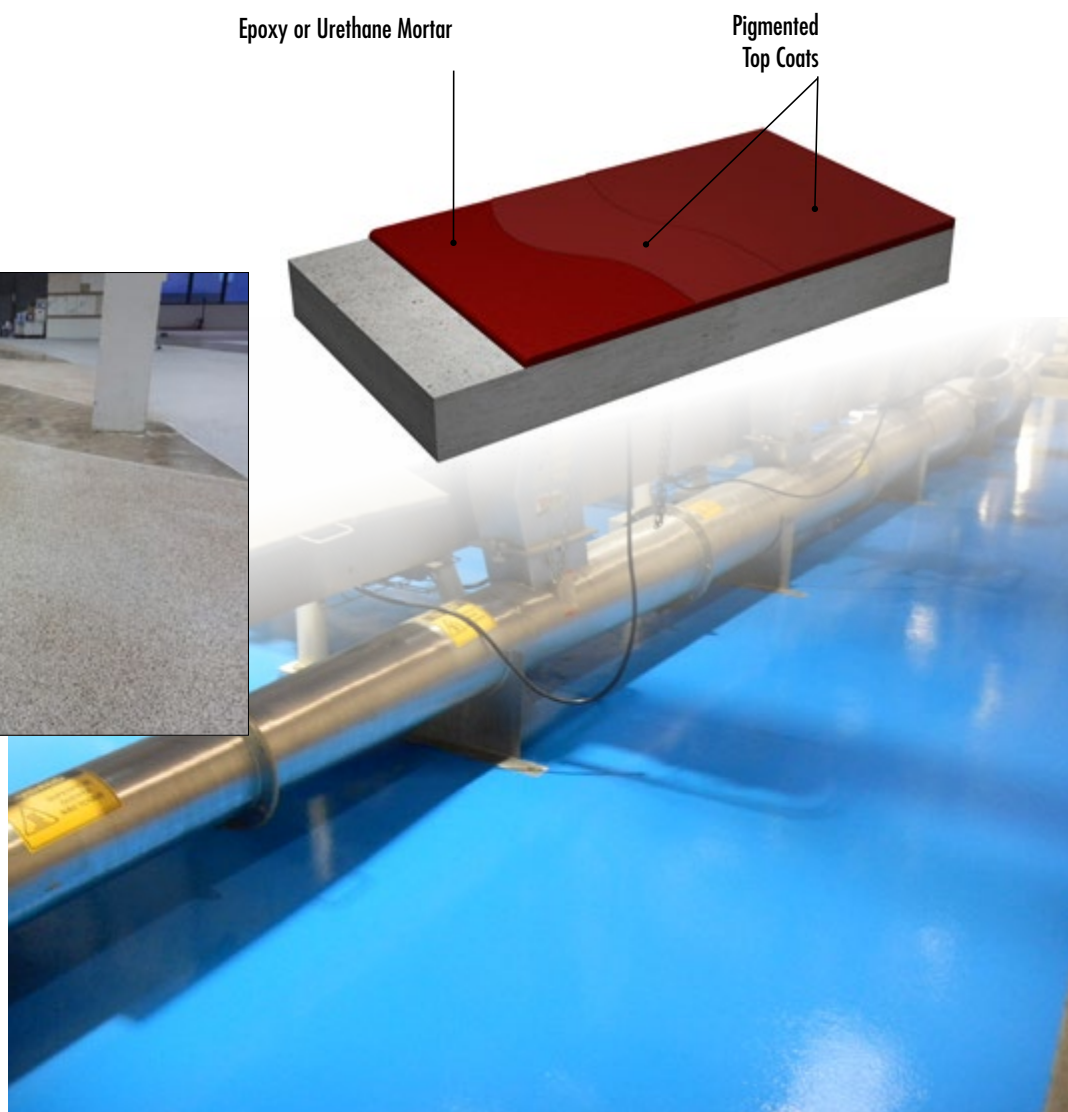
A thick-build, solid-color, resinous flooring solution composed of pure graded silica sand and urethane or epoxy resin, designed to provide a safe, durable floor system in aggressive, high impact environments.

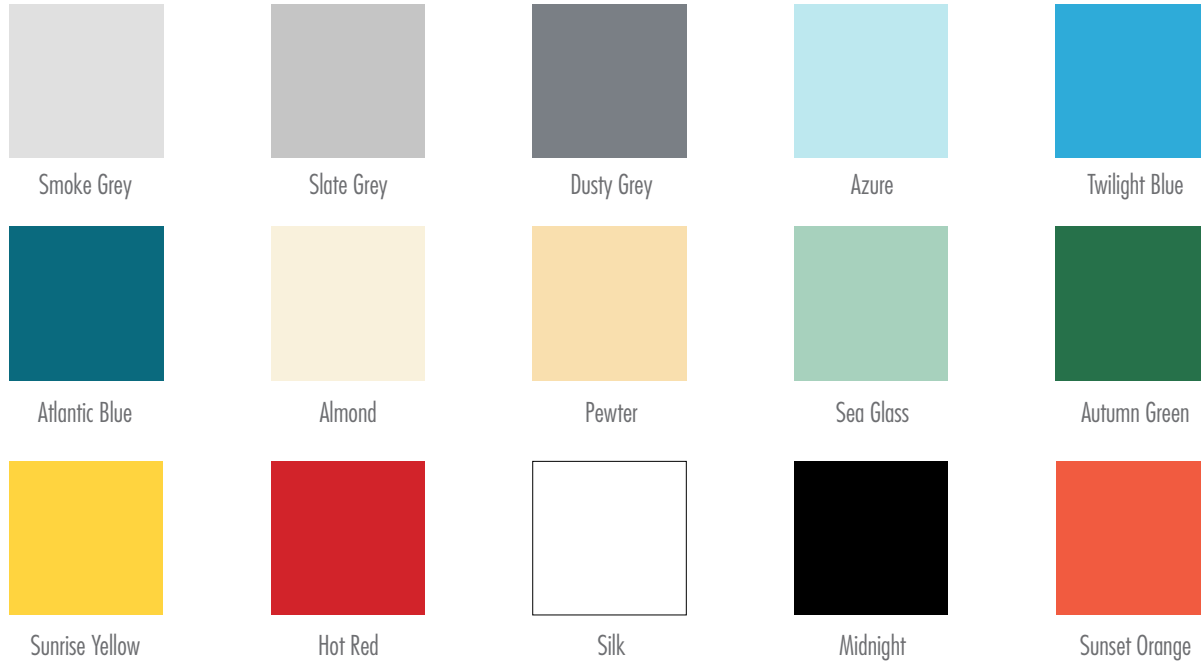
System Features and Benefits

- Superior abrasion and impact resistance
- Supports temperatures from (-45C to 120C)
- Resists thermal shock (UT version)
- Antibacterial and antifungal properties
- Safe, anti-slip finish
- Customizable finish
- High degree of flexibility
- Low odor

Recommended Applications

- Breweries
- Beverage processing facilities
- Mechanical workshops
- Industrial manufacturing
- Food processing facilities
- Slaughterhouses
- Industrial kitchens
- Battery storage rooms
- High impact environments





NOTE — UT version has restricted color table

System Variations	Applications	Cured System Properties	Value *	Methods
MORTAR EP	Standard all epoxy system. Highest value to cost. Fwvor high impact environments with lower chemical attack and thermal shock.	Density	2,09 (g/cm3)	ASTM D 1475
MORTAR EPU	Epoxy mortar with PU top coat. For high impact environments with low thermal shock but can withstand increased chemical attack. UV Stable	Compressive Strength	7397 PSI	ASTM C 579
MORTAR UT	Standard mortar system for food and beverage industry. Supports wet environments and thermal shock.	Flexural Strength	1740 PSI	ASTM C 580
MORTAR UPA	For use in aggressive food and beverage environments where high chemical resistance and UV stability are necessary. Rapid cure top coat.	Abrasion Resistance	0,03 g	ASTM D 4060
		Substrate Adhesion	435 PSI (broke the concrete)	ASTM D 4541
		Temperature Range Resistance	— At 9mm thickness intermitant liquid spills up to 120°C. Air temperatures up to 105°C. — Will not delaminate from substrate due to stress from thermal shock or repeated temperature cycling. — LATICRETE® MORTAR UT is ideal where hot fluids are spilled and maintenance procedures include steam cleaning.	
		UV Resistance	Not Recommended	
		Chemical Attack	Consult Chemical Resistance Table	
		H ₂ O Absorption	Very low Permeability	
		Open to Foot Traffic	8 hours	
		Open to Light Traffic	10 °C = 36 hrs 20 °C = 24 hrs 30 °C = 12 hrs	
		Full Cure Time	10 °C = 10 dias 20 °C = 07 dias 30 °C = 05 dias	

*These values are the averages of all standard thicknesses

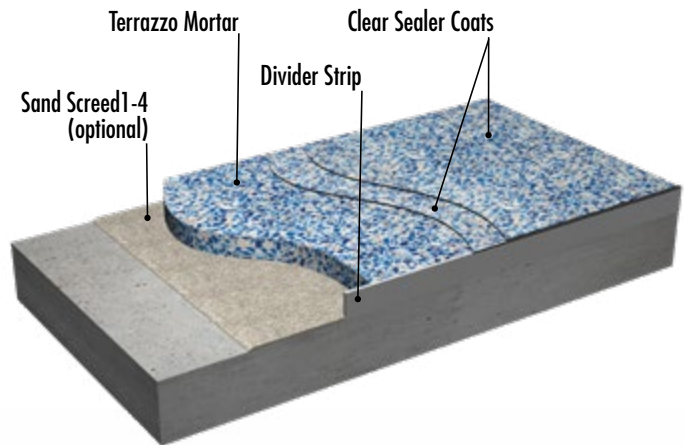
A thick-build, decorative, polished epoxy mortar, with unique aggregate mixes made to provide a durable, easy to maintain floor with unlimited design options.

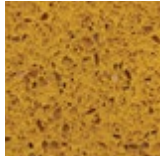
System Features and Benefits

- Total design freedom to create/build unlimited themes and colors
- Excellent abrasion, chemical, and compressive strength
- High durability
- Can install in stages
- Simple maintenance

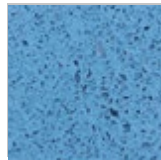
Recommended Applications

- | | | |
|------------------|---------------------|-------------|
| ■ Airports | ■ Corporate offices | ■ Hotels |
| ■ Metro stations | ■ Shopping centers | ■ Hospitals |
| ■ Museums | ■ Schools | ■ Stadiums |

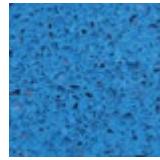




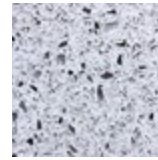
Yellow Gold



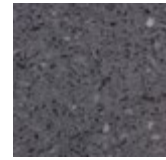
Celeste Blue



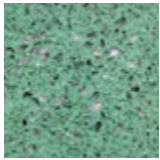
Royal Blue



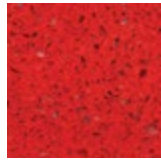
Avalanche



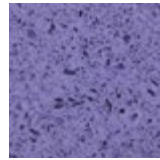
Arctic Grey



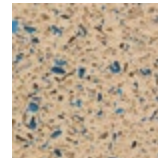
Forest Green



Ruby Red



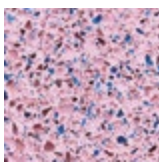
Violet



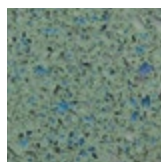
Machiatto Creme



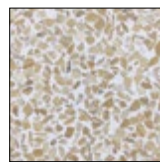
Citrus Orange



Hydrangia Pink



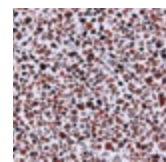
Navajo Green



Gold



Las Vegas Black



Alpine Rose

Cured System Properties	Value *	Methods
Compressive Strength	9427 psi	ASTM D 695 /C 579
H2O Absorption	0.20%	
Coef. Thermal Expansion	45 x 10E-5oC	ASTM D 696
Substrate Adhesion	435 psi	ASTM D 4541
Density	1,55 ± 0,05 (g/cm3)	ASTM D 1475
VOC	2,02 g/L	304-91

*These values are the averages of all standard thicknesses

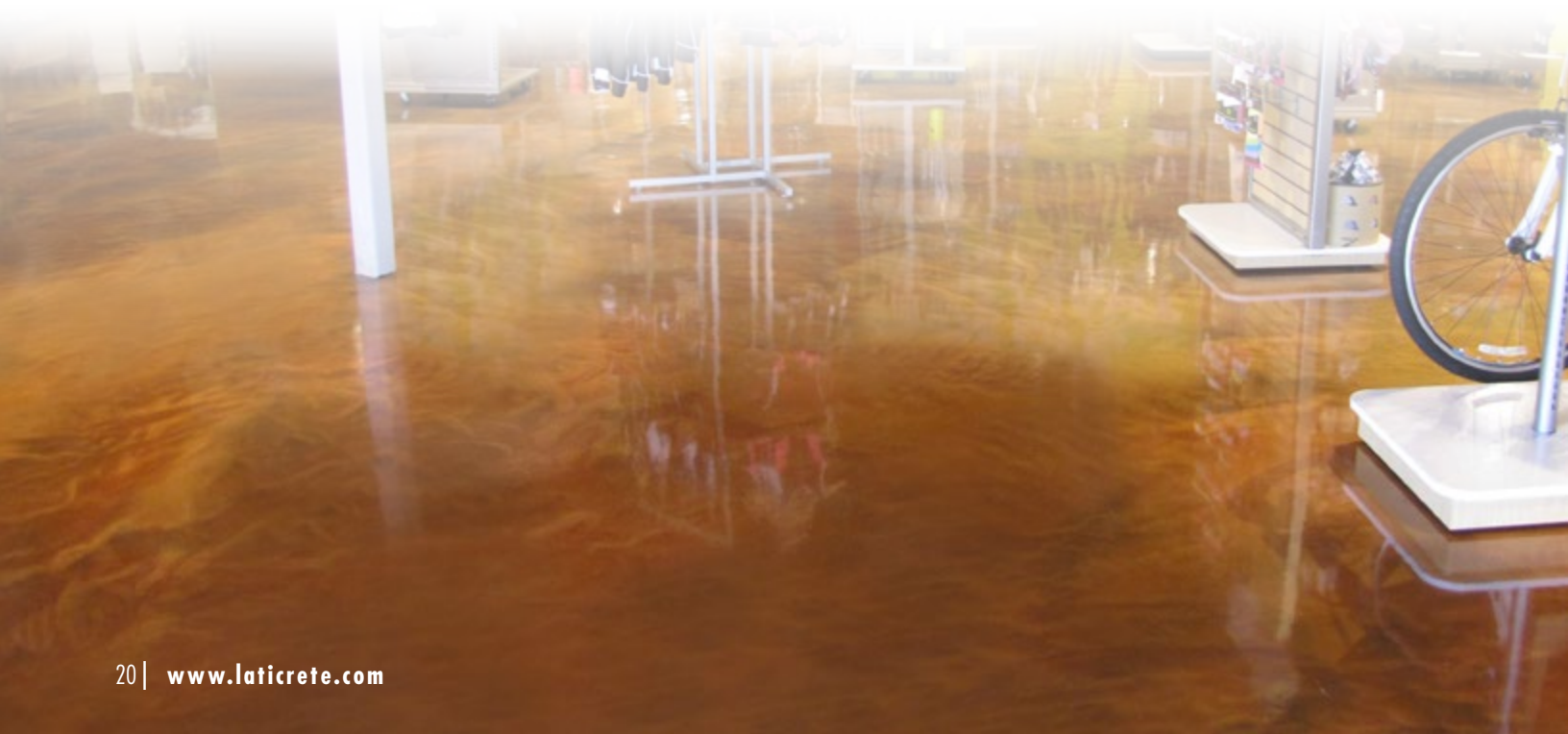
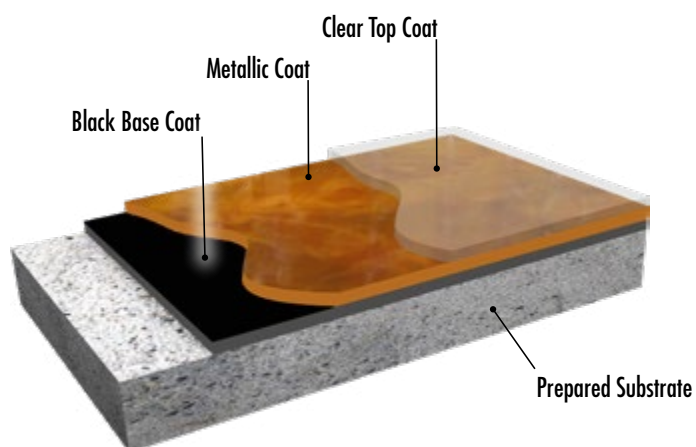
Incorporates highly refined metallic pigments with LATICRETE® resins to provide brilliant color variation and depth. LATICRETE metallic may be manipulated to provide custom finishes to match any environment.

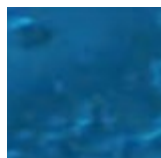
System Features and Benefits

- 12 vibrant colors offering a multitude of finishes
- 3-coat process
- Single day application with next-day return to service
- UV stable
- Optional traction additives for improved slip resistance
- Gloss, satin or matte finish available

Recommended Applications

- | | | |
|----------------------|-----------------|-------------------------|
| ■ Retail showrooms | ■ Healthcare | ■ Entryways and lobbies |
| ■ Car dealerships | ■ Education | ■ Residential garages |
| ■ Stadium concourses | ■ Event centers | |





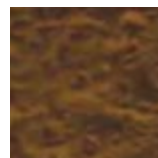
Cobalt Blue



Copper



Royal Purple



Coffee



Chrome



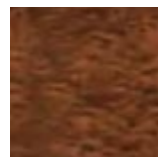
Electric Orange



Arctic Ice



Spanish Gold



Walnut



Deep Cherry



Aspen Sunset



Gunmetal Grey

System Variations	Applications
METALLIC	Highly decorative coating application, most popular within retail showrooms and similar settings.
METALLIC PURE	Minimal smell, VOC-Free. Ideal for interior (odor sensitive) environments.

Cured System Properties	Value *	Methods
Coefficient of Friction	dry: 0.83 wet: 0.98	ASTM C 1028
Hardness	94	ASTM D 2240
Abrasion Resistance	22-28	ASTM D 4060 (mg loss)
Tensile Strength	4500-5000	ASTM D 638, D 2370
Substrate Adhesion	400-500+, concrete fracture	ASTM D 4541
Flammability	self extinguishing	ASTM D 635

*These values are the averages of all standard thicknesses



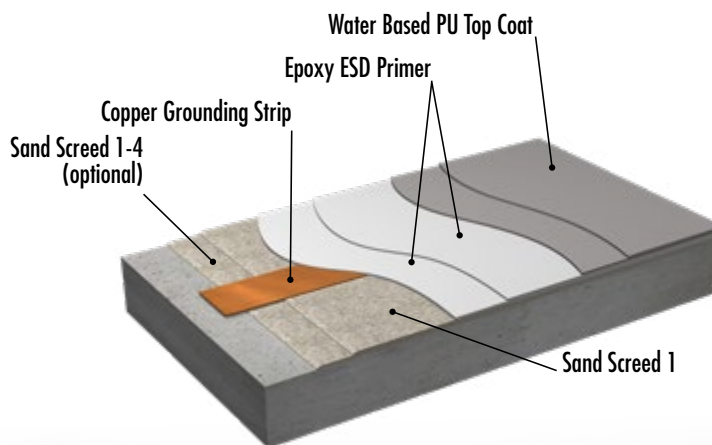
A premium, specialty resinous flooring system designed to control the electrical resistance in the floor. LATICRETE® ESD can be combined with any finish LATICRETE offers. A durable and aesthetic floor coating with various finish options.

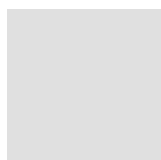
System Features and Benefits

- Can be conductive or dissipative
- Ultimate customizability
- High abrasion and chemical resistance
- Customizable thickness (3-6mm) available
- Customizable traction available
- UV stable available
- Tolerates rising humidity
- Integral sanitary cove

Recommended Applications

- Electronics manufacturing
- Operating rooms
- Laboratories
- Advanced technology manufacturing
- Explosive materials manufacturing
- In environments to control the generation of sparks and static electricity





Smoke Grey



Slate Grey



Dusty Grey



Midnight

System Variations	Applications
BUILD ESD	Use when want a solid color finish and the ability to completely control thickness and customize the type of resin use depending on the needs of the client.

Cured System Properties	Value *	Methods
Density	1,7 ± 0,05 (g/cm3)	ASTM D 1475
Compressive Strength	11457 psi	ASTM D 695/C 579
Flexural Strength	3770 psi	ASTM D 790/ C 580
Abrasion Resistance	0,15 g	Taber CS 17-ASTM D 4060
Substrate Adhesion	> 435 psi	ASTM D 4541
Elastic Modulus	1885.000 psi	ASTM D 695

*These values are the averages of all standard thicknesses

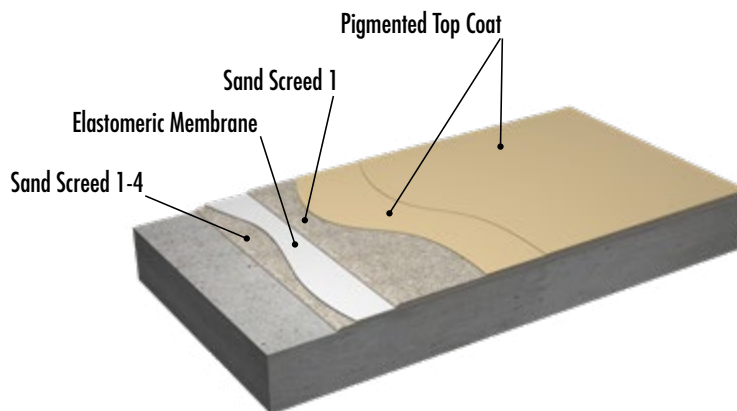
A durable and aesthetic floor coating with various finish options; LATICRETE® Deck contains an integral elastomeric membrane designed to resist cracking and act as a waterproof barrier.

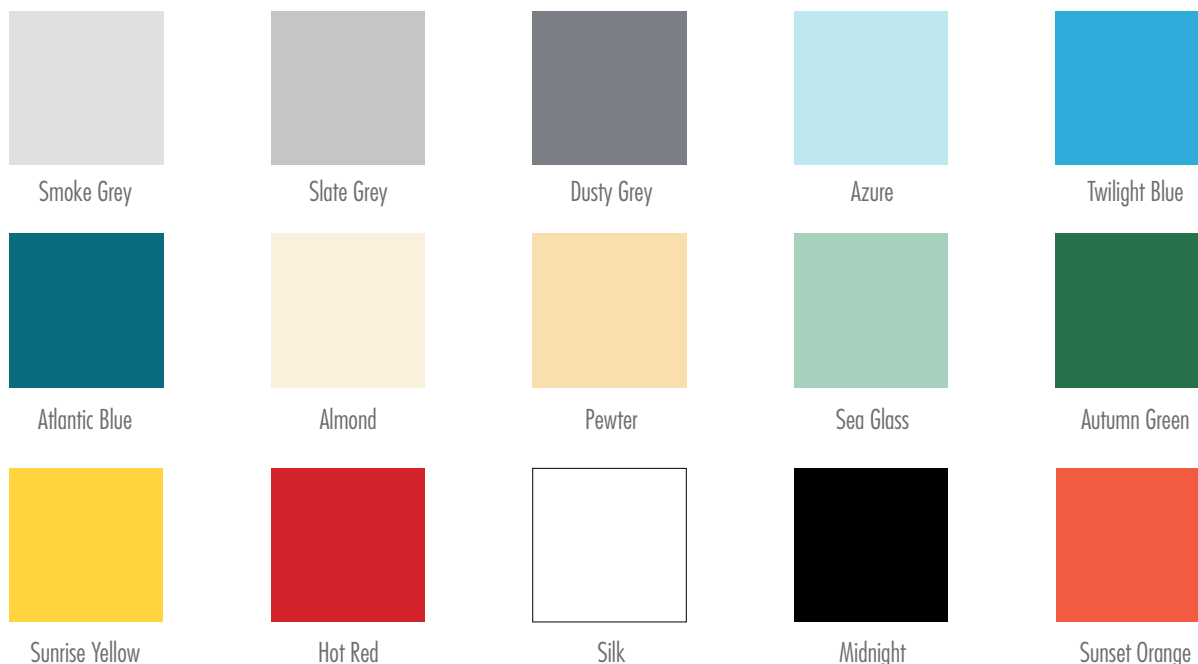
System Features and Benefits

- Many blends and finishes
- Waterproof
- No hot tire pickup version
- UV resistant
- Exterior applications
- Easily modified to paint lanes/designs
- High chemical and abrasion resistance
- Stops crack propagation

Recommended Applications

- Parking garages
- Exterior decks
- Any exterior area over occupied space
- Outside areas in general
- Any floor requiring waterproofing
- Any situation where excess movement is expected





NOTE: Deck can also utilize flake and quartz finishes if desired

System Variations	Applications
DECK EP	Standard all epoxy system. Highest value/cost ratio. Interior, medium traffic, commercial/industrial. High Shine finish.
DECK-FLOW	Self leveling version of LATICRETE deck provides an ultra-flat and brilliant surface if that aesthetic is desired.
DECK EPU	Polyurethane top-coat provides extra impact, abrasion, and UV resistance as well as a low gloss finish. For exterior applications.
DECK-QUARTZ	Colored quartz broadcast version of LATICRETE Deck. Use if that aesthetic is desired.

Cured System Properties	Value *	Method
Compressive Strength	11457 psi	ASTM D 695/C 579
Flexural Strength	3770 psi	ASTM D 790/ C 580
Abrasion Resistance	0,15 g	Taber CS 17-ASTM D 4060
Substrate Adhesion	217 psi	ASTM D 4541
Elastic Modulus	1885.000 psi	ASTM D 695
Membrane Elongation	400%	

*These values are the averages of all standard thicknesses

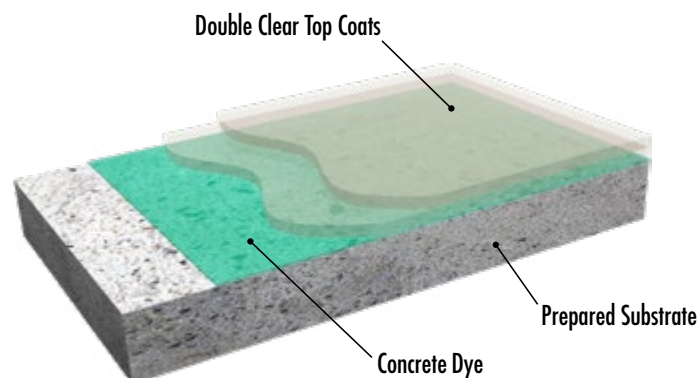
A decorative concrete dye and seal system that provides for a variety of unique finishes. As a popular alternative to polished or acid-stained concrete, this system offers a similar look with added durability and chemical resistance.

System Features and Benefits

- High gloss, satin or matte finish
- Available mottled or variegated finish
- Stain resistant
- Superior durability over acrylic or epoxy based concrete sealers
- Optimal substrate adhesion
- VOC—Free available

Recommended Applications

- | | | |
|------------------|---------------------|-------------|
| ■ Airports | ■ Corporate offices | ■ Hotels |
| ■ Metro stations | ■ Shopping centers | ■ Hospitals |
| ■ Museums | ■ Schools | |

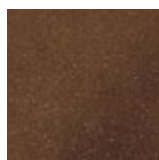




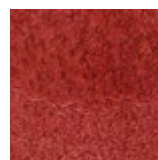
Raw Sienna



Turquoise



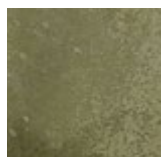
Chocolate



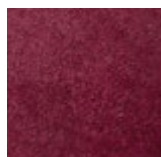
Citrus



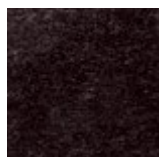
Mahogany



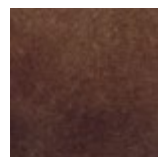
Green



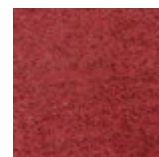
Sepia



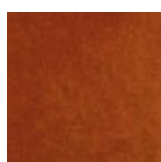
Black



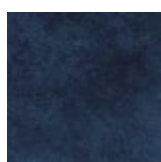
Walnut



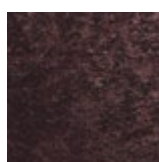
Terra Cotta



Pumpkin



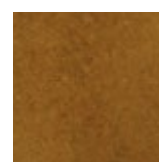
Sapphire



Dark Alder



Gold



Caramel

System Variations	Applications
STAIN PU	Decorative concrete requiring above average chemical and abrasion resistance.
STAIN PA	Decorative concrete requiring above average chemical and abrasion resistance and very fast turn around.
STAIN PA PURE	Green-friendly decorative concrete dye and seal with minimal odor and 0-VOCs.

Cured System Properties	Value *	Methods
Coefficient of Friction	dry: 0.98 wet: 0.83	ASTM C 1028
Hardness	94	94
Abrasion Resistance	22-28	ASTM D 4060 (mg loss)
Tensile Strength	4500-5000	ASTM D 638, D 2370
Substrate Adhesion	400-500+, concrete fracture	ASTM D 4541
Flammability	self extinguishing	ASTM D 635

*These values are the averages of all standard thicknesses

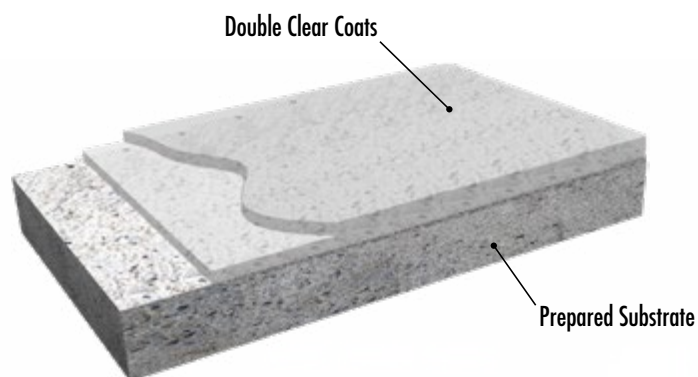
An economical and functional clear resinous sealer system for concrete. The system provides a wet concrete look, enhancing the colors of the underlying concrete substrate.

System Features and Benefits

- Provides a “wet concrete” look, enhances underlying aggregate colors
- UV stable
- Gloss, satin or matte finish
- Stain resistant
- Superior durability over acrylic or epoxy based concrete sealers
- Optimal substrate adhesion
- VOC-free available
- Customizable traction available

Recommended Applications

- Garages
- Warehouses
- Distribution centers
- Manufacturing facilities
- Event centers
- Walk-ways and concourses



System Variations	Applications
SEAL PU	Decorative concrete requiring above average chemical and abrasion resistance.
SEAL PA	Decorative concrete requiring above average chemical and abrasion resistance and very fast turn around.
SEAL PA PURE	Green-friendly with minimal odor and 0-VOCs. Ideal for indoor applications.

Cured System Properties	Value *	Method
Coefficient of Friction	dry: 0.98 wet: 0.83	ASTM C 1028
Hardness	94	ASTM D 2240
Abrasion Resistance	22-28	ASTM D 4060 (mg loss)
Tensile Strength	4500-5000	ASTM D 638,D 2370
Substrate Adhesion	400-500+, concrete fracture	ASTM D 4541
Flammability	self extinguishing	ASTM D 635

*These values are the averages of all standard thicknesses



In addition to the range of flooring systems outlined in this brochure, LATICRETE® provides an ample array of complementary products to fully customize your floor to meet any and all needs.

Cementitious Self Leveling

An economical way to prepare an uneven concrete substrate before installing a resinous floor system.

Cove Base

A variety of thixotropic products to build coves between floors and walls as well as other features.

Joint Sealers

An array of joint sealer material including Fast Fix, a ultra fast modified urethane hybrid.

Additives

Numerous additives for resinous finishes including traction additives, such as Diamond Topp, an ultra high performance aluminum oxide additive which greatly enhances abrasion and wear resistance of the surface.



Antibacterial

LATICRETE® Clinical Plus is an antibacterial coating that can be incorporated as a top coat in any of our systems for aseptic environments.

Vapor Membrane

Our Moisture Vapor Barrier allows resinous coatings to be installed on green concrete or to decrease the moisture vapor emission from a slab to tolerable levels.

Waterproof Membrane

This can be incorporated into any LATICRETE High Performance Flooring Solution to waterproof the system and increase crack resistance.

Wall Systems

Various systems for sanitary environments for seamless floor to ceiling transitions.



LATICRETE International, Inc. ■ One LATICRETE Park North, Bethany, CT 06524-3423 USA ■ 1.800.243.4788 ■ +1.203.393.0010 ■ www.laticrete.com

DS-INTL-309.0-0818 ©2018 LATICRETE International, Inc. All trademarks shown are the intellectual properties of their respective owners.