



WALL FINISHES



Are you worried about your
wall paint peeling off?



NON FLAKING

WATER RESISTANT

STRONG ADHESION

INCREASE PAINT COVERAGE



LATICRETE® supplies a variety of commercial and industrial wall finishing products to provide skim coating and smoothing prior to the application of wall covering solutions.

Product categories include decorative and non-decorative professional maintenance products for walls - all designed to work together, providing a comprehensive, warranted installation and ways to protect and transform wall projects for years to come.





LATAFINISH WALL PUTTY GREY COARSE & WHITE FINE FINISHES

Refer to Data Sheet: 5100.me

PACKAGING : 20 kg Bag — 63 bags per pallet
Also available in 5 Kg.

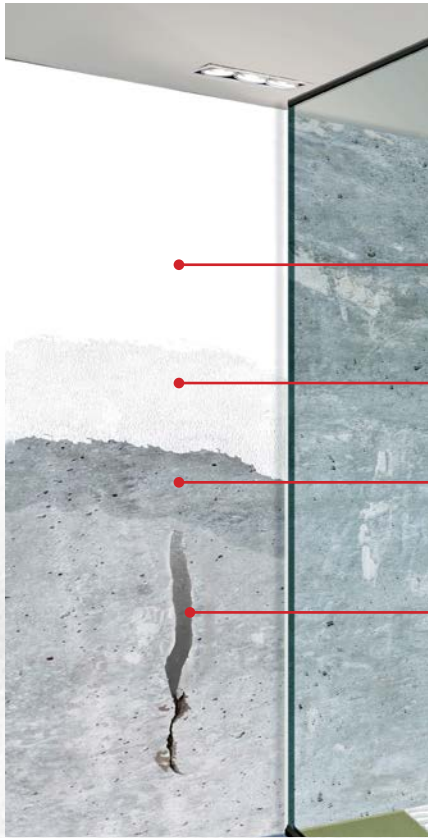
COLORS: White (Fine) & Grey (Coarse)

FEATURES/BENEFITS:

- Non - Flaking
- Water Resistant
- Prevents growth of fungus & algae
- Increases Paint coverage
- Long lasting - Strong adhesion strength
- No primer needed before applying paint
- Smooth Finish



LATAFINISH Wall Putty Fine Finish application for an external compound wall of the villa project in UAE.



*Optional

FINE FINISH

LATAFINISH Wall Putty is water resistant white cement based fine powder. After mixing with recommended quantity of water it forms a fine paste, which provides a very fine finish to walls and ceiling, ideal for use on Plastered / concrete walls and ceilings. It covers unevenness & pinholes of walls and provides smooth finish dry surfaces for painting.

Approximate Coverage: 12 to 15 Sq. Ft. (i.e. 1.1 to 1.4 Sq. M) per Kg of Powder when mixed with water, for total approximate thickness of 1.5 mm in two coats. [20Kg bag of Powder will cover 22 to 28 Sq. M.]

COARSE FINISH

LATAFINISH Grey Coarse Finish Wall Putty is a cement based powder. After mixing with recommended quantity of water it forms a paste, which is used as a base coat. It covers surface unevenness and can be used as a layer before using LATAFINISH Wall Putty fine finish.

Approximate Coverage: 3 to 4 Sq. Ft. (0.28 to 0.37 m²) per Kg of Powder when mixed with water for total approximate thickness of 3 mm. [20Kg bag of Powder will cover 5.6 to 7.4 m²]

PATCH - REPAIR

Patch is a premium quality, polymer fortified, cement-based patching and repair mortar designed for use over most substrates including concrete, masonry, gypsum boards.

- Features/Benefits
- Easy to Mix and Apply
- Interior or exterior applications
- Excellent Bonding with many substrates

MULTI-PRIMER









It is a synthetic polymer based multi use primer for coating and cementitious mortars. It can be used over concrete, masonry, cement board, renders and screeds.

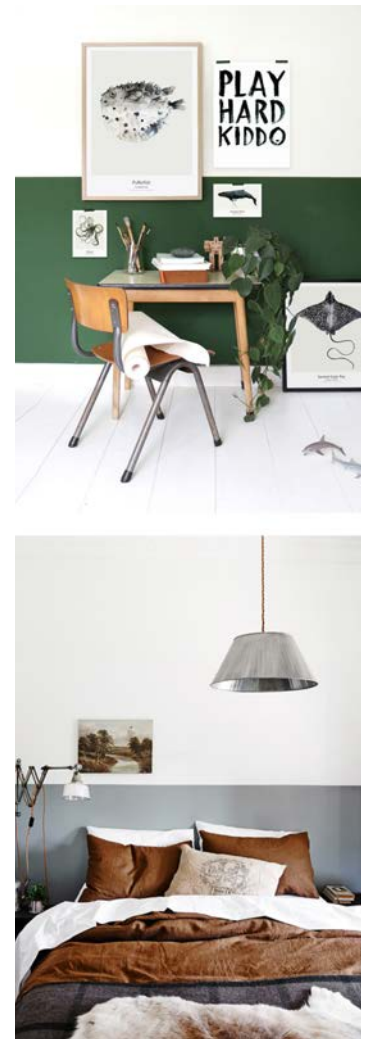
- Features/Benefits
- Water based - non-hazardous, non-flammable.
- Reduces moisture absorption by masonry and mortar surfaces
- Easy to apply — no special tools required.



THE ACRYLIC-BASED PUTTY IS GROWING LESS POPULAR DUE TO THE SUPERIOR QUALITY AND DURABILITY OFFERED BY WHITE CEMENT-BASED PUTTY, WHICH IS NOW MORE READILY AVAILABLE AND COST-FRIENDLY AS WELL.

TO PUT THINGS INTO PERSPECTIVE, HERE'S A TABLE OF COMPARISON:

ACRYLIC WALL PUTTY	LATAFINISH CEMENT BASED WALL PUTTY
 <p>Flaking Better than POP but begins to wear off and cause peeling and flaking of paints.</p>	 <p>Non Flaking High Durability It is stronger and highly durable due to superior binding properties.</p>
 <p>No resistance to water. It wears off quickly and requires a re-finish every year. This means it cannot be applied to moist surfaces.</p>	 <p>Water resistant Highly resistant to dampness and moisture for many years. Has no problems when applied to moist or damp surfaces.</p>
 <p>Low Strength Binding property is lower than cement-based putty and begins to wear off within a year at the max.</p>	 <p>High Adhesion Strength A cement-based putty, it has good tensile adhesion strength, compressive strength and flexural strength.</p>
 <p>Only for interior use It can only be applied to interiors.</p>	 <p>Interior & Exterior Interiors or exteriors. The whiteness of the product makes it ideal for decorative purpose</p>



INSTALLATION*

Preparation

All Surfaces should be between 40°F (4°C) and 90°F (32°C) temp. It should be free from all dirt, oil, grease, loose sand particles.

If it is old painted wall/lime washed wall then first scratch old surface. Dry and absorbent surfaces should be moistened/pre wet with clean water.

FINE FINISH

Mixing

Use approximately 8 to 9 L of fresh water for 20 kg LATAFINISH® Wall Putty, i.e. Water to Powder ratio is approx. 40:100. Mix thoroughly till uniform (free from bubbles and lumps) paste occurs. Allow paste to slake for 5-10 minutes. Adjust consistency if necessary. Remix and apply with putty blades.

Application

Apply two coats of Latafinish Wall Putty on the substrate with maximum total thickness 1.5mm with the putty blades. Ensure that the second coat application should be done when the first coat is totally dried after min. 3hrs. Always prepare a required quantity of putty paste and use it within 2-3 hrs. To remove unevenness/ application mark and to make glossy surfaces before applying paint use water proof emery paper more than 500 numbers.

COARSE FINISH

Mixing

Use approximately 4.5 to 6 L of fresh water for 20 kg LATAFINISH® Grey coarse putty. i.e. Water to Powder ratio is approx 25:100. Mix thoroughly till uniform (free from bubbles and lumps) paste occurs. Allow paste to slake for 5-10 minutes. Adjust consistency if necessary. Remix and apply with iron trowel/ blades.

Application

Apply one coat of the above paste on to the substrate with the trowel. The thickness allowed in one coat application is 3-5 mm. Ensure that the second coat application should be done when the first coat is totally dried. The second coat can be done with either Latafinish Wall Putty or Coarse Putty. Always prepare a required quantity of putty paste and use it within 2-3 hrs.

*Refer to the data-sheet 5100-F.me and 5100-C.me for the detailed information.

