

4

3

2

1

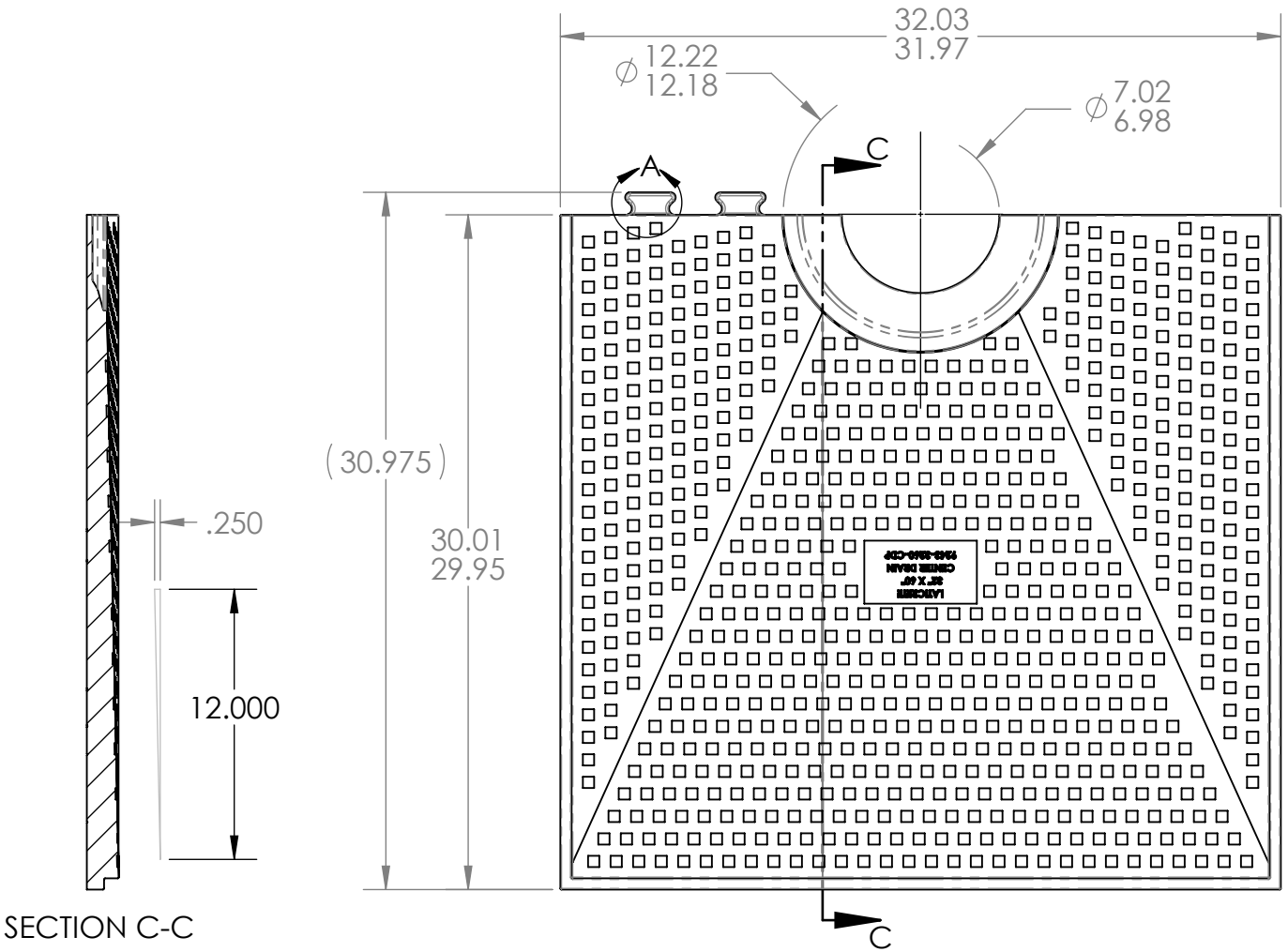
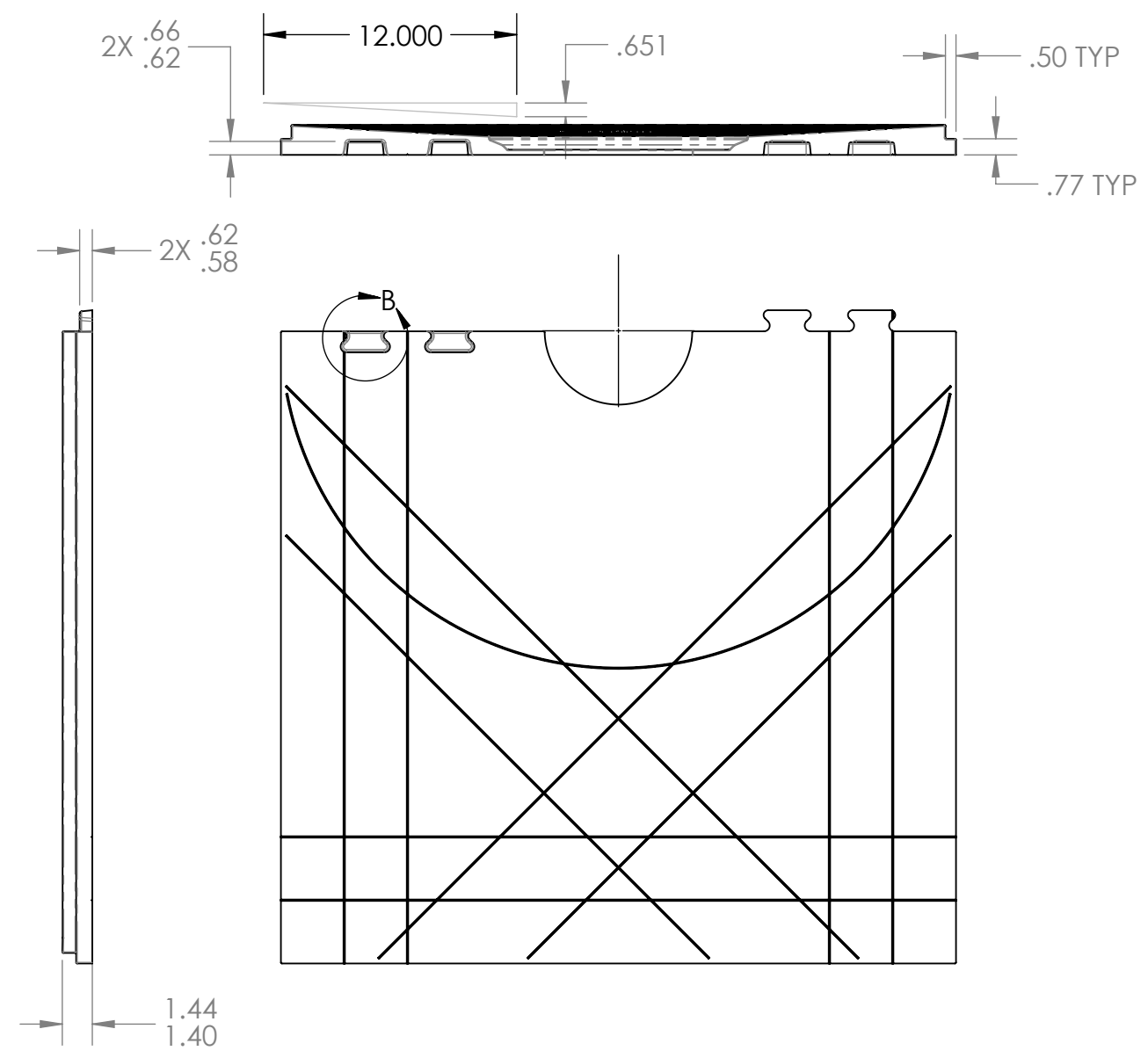
NOTES:

- 1. DENSITY TO BE A MIN OF 3.0 LBS/FT³.
- 2. MATERIAL TO BE A MIN 50 PSI COMPRESSIVE STRENGTH.
- 3. NO BURRS OR LOOSE MATERIAL LARGER THAN .10".
- 4. DRAWING IS FOR INSPECTION PURPOSES ONLY. ALL UNDIMENSIONED FEATURES TO BE HELD +/- .020" WITH RESPECT TO 3D CAD MODEL.

REVISIONS				
ZONE	REV.	DESCRIPTION	DATE	APPROVED
-	C	INCREASED MINIMUM PITCH TO .25"/FT, ADDED PITCH TRIANGLES, ADDED SEC C-C	7/11/19	

B

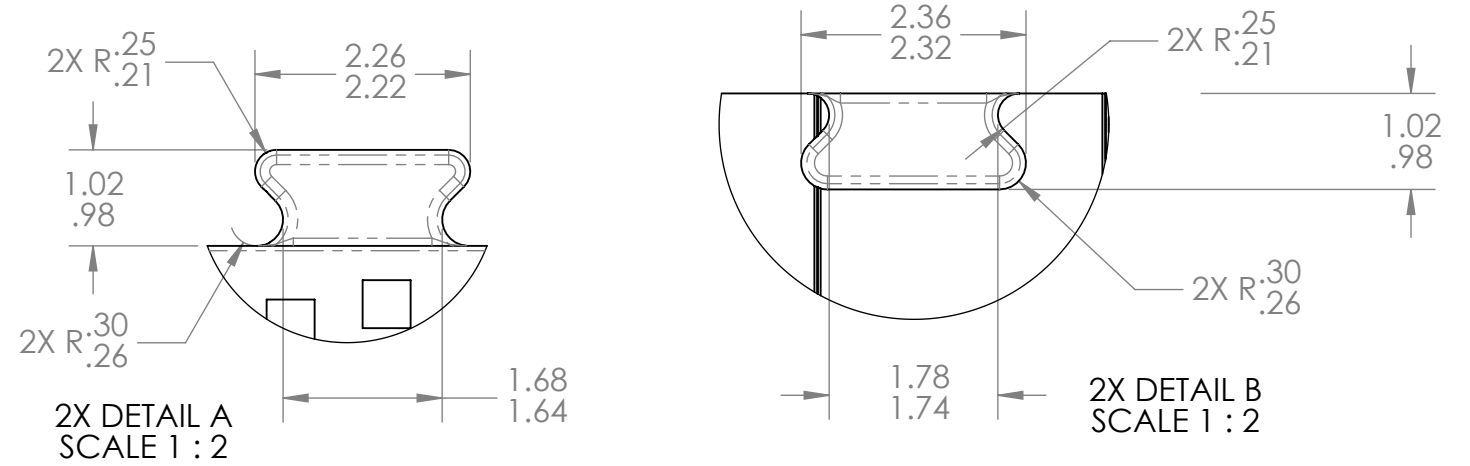
B



SECTION C-C

A

A



UNLESS OTHERWISE SPECIFIED:	NAME	DATE
DIMENSIONS ARE IN INCHES	DRAWN BY	BAYER 5/23/18
TOLERANCES:	CHECKED BY	
ANGULAR: MACH ± 2 BEND ± 5	APPROVED BY	
TWO PLACE DECIMAL ± .010	COMMENTS:	
THREE PLACE DECIMAL ± .005		
INTERPRET GEOMETRIC TOLERANCING PER: ASME Y14.5 - 2009		
MATERIAL SEE NOTES		
FINISH N/A		
DO NOT SCALE DRAWING		

LATICRETE

TITLE:
32"X60" CENTER DRAIN PAN HALF

SIZE	DWG. NO.	REV
B	9243-3260-CDP	C

SCALE: 1:8 WEIGHT: SHEET 1 OF 1

PROPRIETARY AND CONFIDENTIAL

THE INFORMATION CONTAINED IN THIS DRAWING IS THE SOLE PROPERTY OF LATICRETE INTERNATIONAL, INC. ANY REPRODUCTION IN PART OR AS A WHOLE WITHOUT THE WRITTEN PERMISSION OF LATICRETE INTERNATIONAL IS PROHIBITED.

LATICRETE INTERNATIONAL INC.
91 AMITY ROAD
BETHANY CT 06524

4

3

2

1