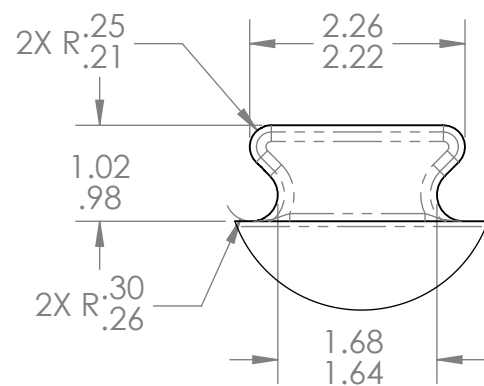
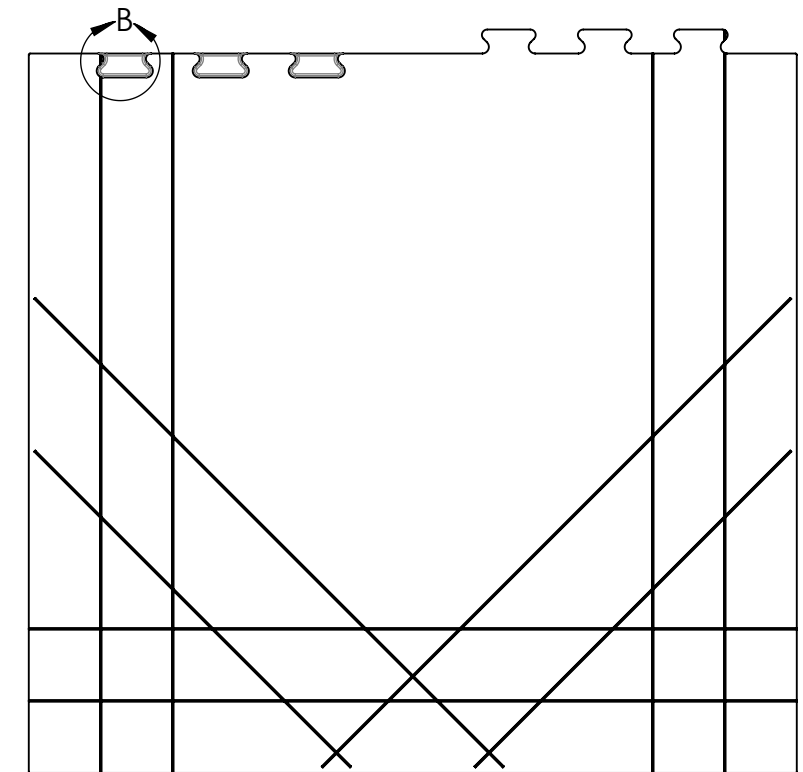
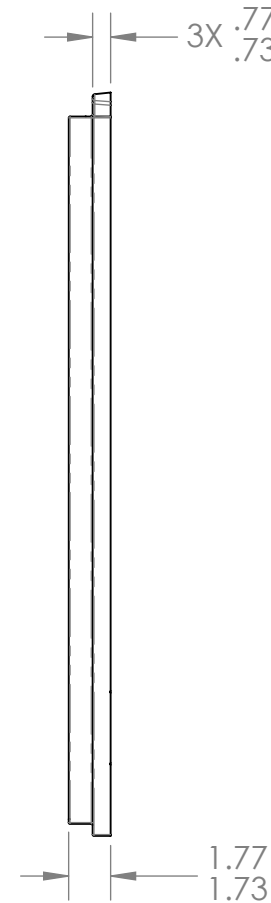
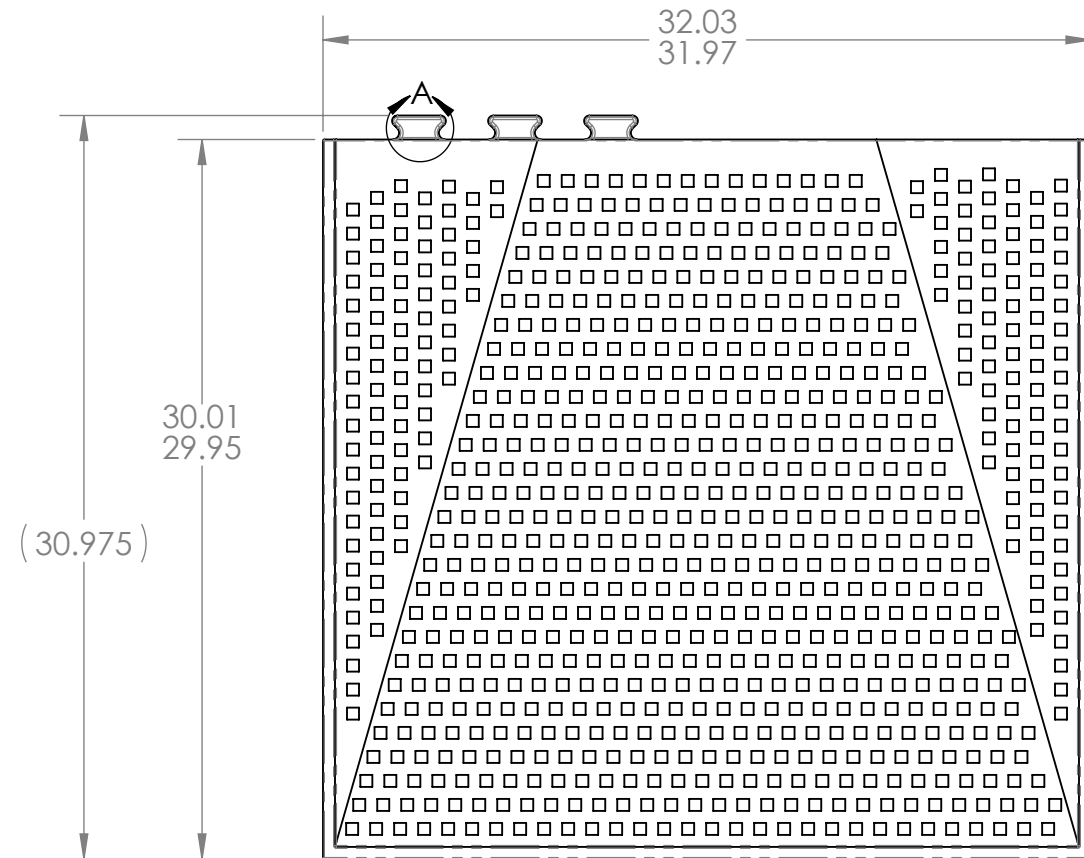
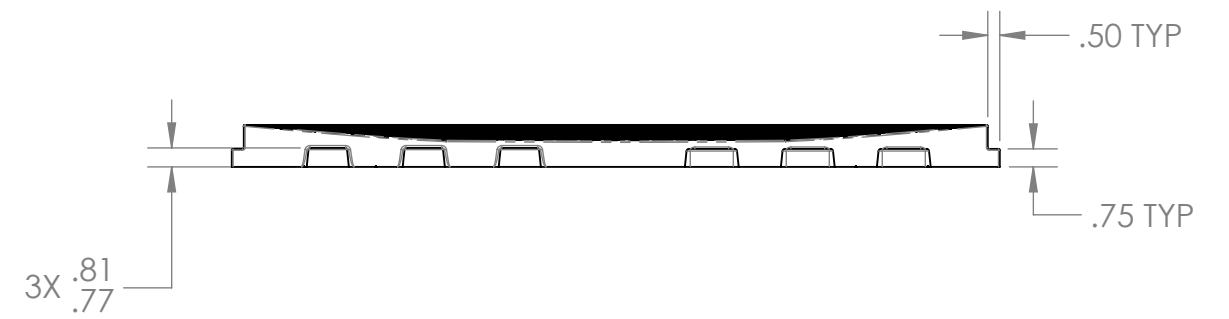
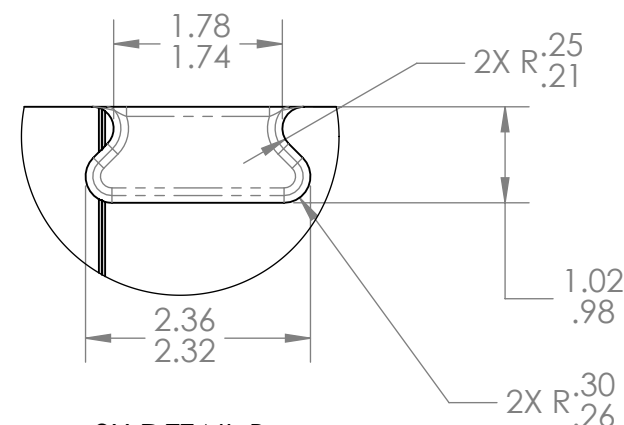


NOTES:

1. DENSITY TO BE A MIN OF 3.0 LBS/FT³.
2. MATERIAL TO BE A MIN 50 PSI COMPRESSIVE STRENGTH.
3. NO BURRS OR LOOSE MATERIAL LARGER THAN .10".
4. DRAWING IS FOR INSPECTION PURPOSES ONLY. ALL UNDIMENSIONED FEATURES TO BE HELD +/- .020" WITH RESPECT TO 3D CAD MODEL.



3X DETAIL A
SCALE 1 : 2



3X DETAIL B
SCALE 1 : 2

PROPRIETARY AND CONFIDENTIAL

THE INFORMATION CONTAINED IN THIS DRAWING IS THE SOLE PROPERTY OF LATICRETE INTERNATIONAL, INC. ANY REPRODUCTION IN PART OR AS A WHOLE WITHOUT THE WRITTEN PERMISSION OF LATICRETE INTERNATIONAL IS PROHIBITED.

LATICRETE INTERNATIONAL INC.
91 AMITY ROAD
BETHANY CT 06524

UNLESS OTHERWISE SPECIFIED:	NAME	DATE	LATICRETE	
DIMENSIONS ARE IN INCHES TOLERANCES: ANGULAR: MACH ± 2 BEND ± 5 TWO PLACE DECIMAL ± .010 THREE PLACE DECIMAL ± .005	DRAWN BY	BAYER 5/23/18		TITLE:
INTERPRET GEOMETRIC TOLERANCING PER: ASME Y14.5 - 2009	CHECKED BY			32"X60" OFF-CENTER DRAIN PAN HALF 1
MATERIAL SEE NOTES	APPROVED BY			SIZE DWG. NO. REV
FINISH N/A	COMMENTS:		B 9243-3260-OCDP-001 D	
DO NOT SCALE DRAWING			SCALE: 1:8 WEIGHT: SHEET 1 OF 1	