

4

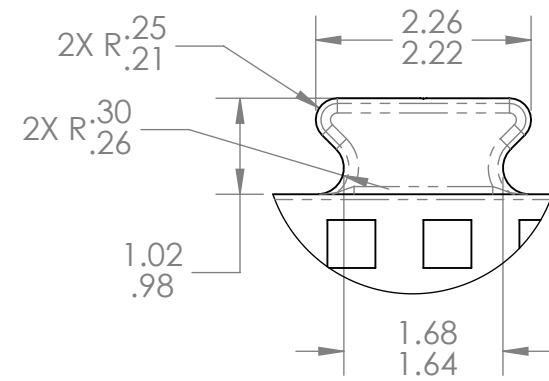
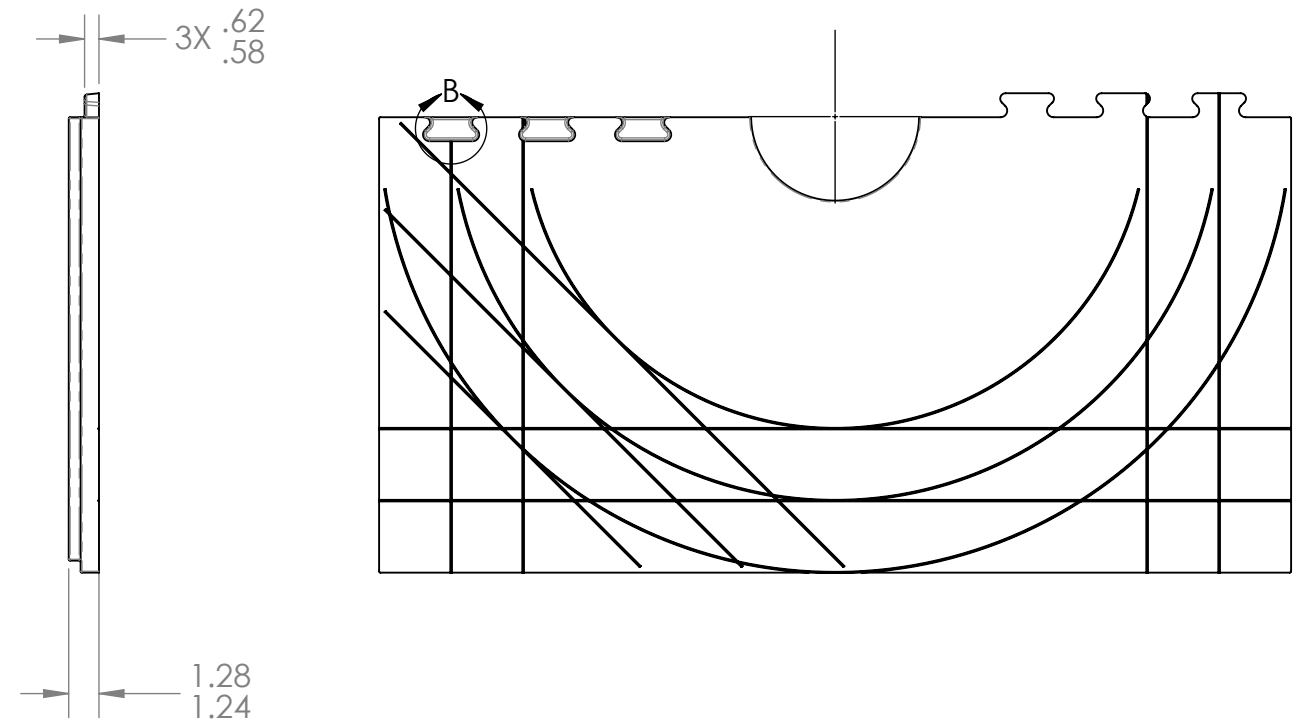
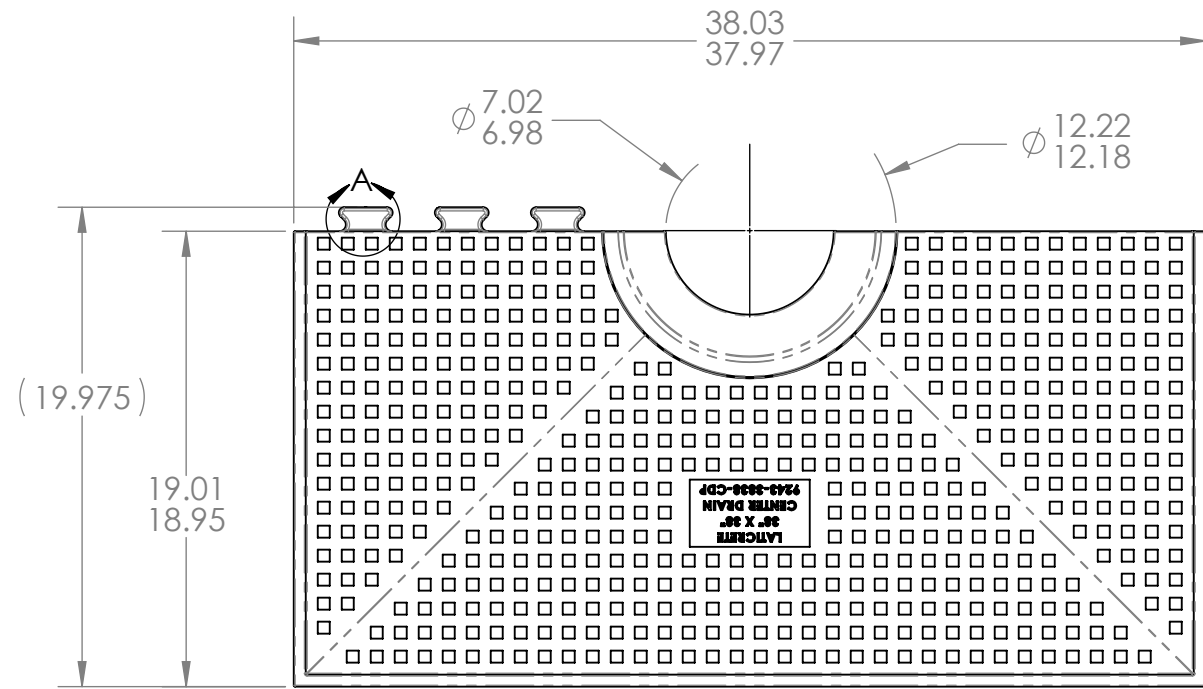
3

2

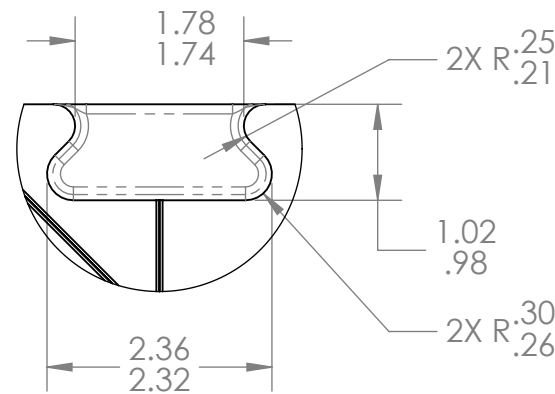
1

NOTES:

- 1. DENSITY TO BE A MIN OF 3.0 LBS/FT³.
- 2. MATERIAL TO BE A MIN 50 PSI COMPRESSIVE STRENGTH.
- 3. NO BURRS OR LOOSE MATERIAL LARGER THAN .10".
- 4. DRAWING IS FOR INSPECTION PURPOSES ONLY. ALL UNDIMENSIONED FEATURES TO BE HELD +/- .020" WITH RESPECT TO 3D CAD MODEL.



3X DETAIL A
SCALE 1 : 2



3X DETAIL B
SCALE 1 : 2

PROPRIETARY AND CONFIDENTIAL

THE INFORMATION CONTAINED IN THIS DRAWING IS THE SOLE PROPERTY OF LATICRETE INTERNATIONAL, INC. ANY REPRODUCTION IN PART OR AS A WHOLE WITHOUT THE WRITTEN PERMISSION OF LATICRETE INTERNATIONAL IS PROHIBITED.

LATICRETE INTERNATIONAL INC.
91 AMITY ROAD
BETHANY CT 06524

UNLESS OTHERWISE SPECIFIED:	NAME	DATE
DIMENSIONS ARE IN INCHES TOLERANCES: ANGULAR: MACH ± 2 BEND ± 5 TWO PLACE DECIMAL ± .010 THREE PLACE DECIMAL ± .005	DRAWN BY BAYER	5/23/18
INTERPRET GEOMETRIC TOLERANCING PER: ASME Y14.5 - 2009	CHECKED BY	
MATERIAL SEE NOTES	APPROVED BY	
FINISH N/A	COMMENTS:	
DO NOT SCALE DRAWING		

LATICRETE		
TITLE: 38"X38" CENTER DRAIN PAN HALF		
SIZE B	DWG. NO. 9243-3838-CDP	REV B
SCALE: 1:8	WEIGHT:	SHEET 1 OF 1

4

3

2

1

B

B

A

A