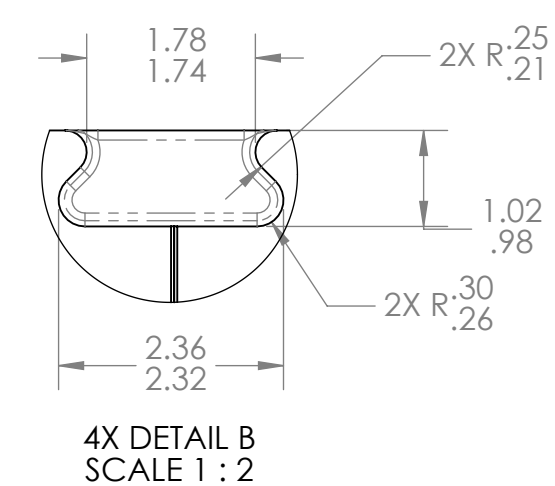
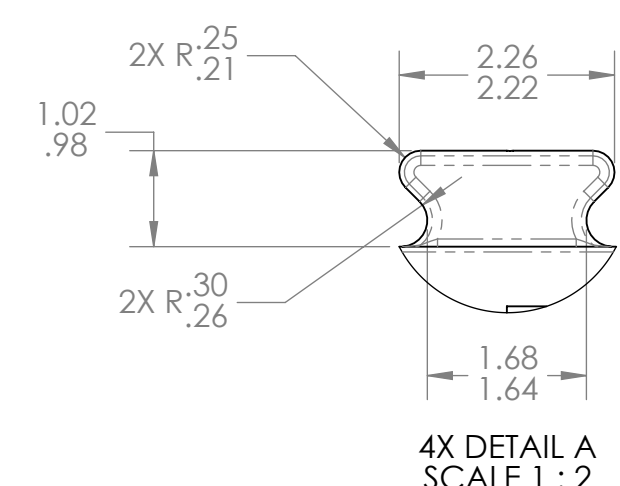
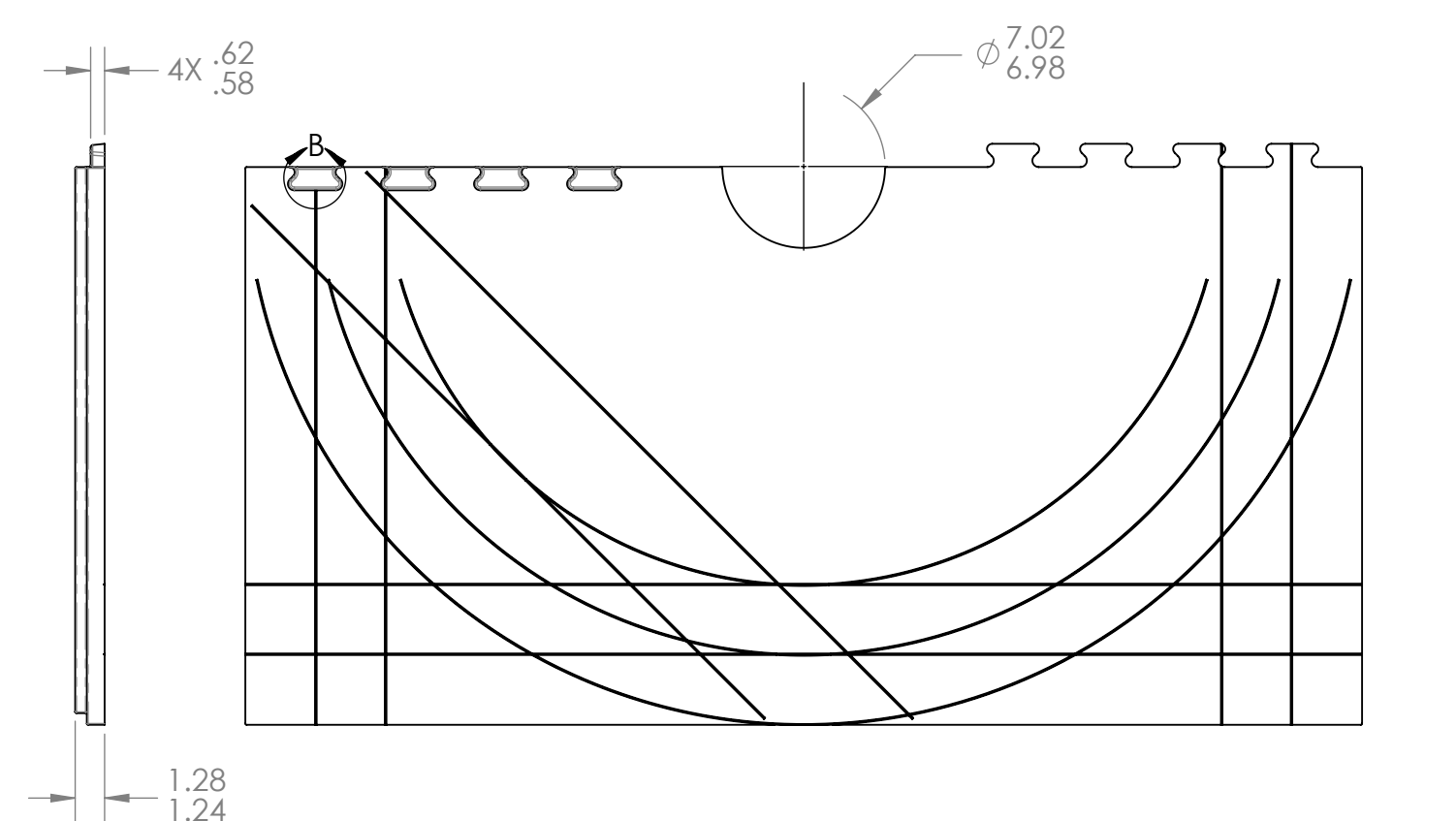
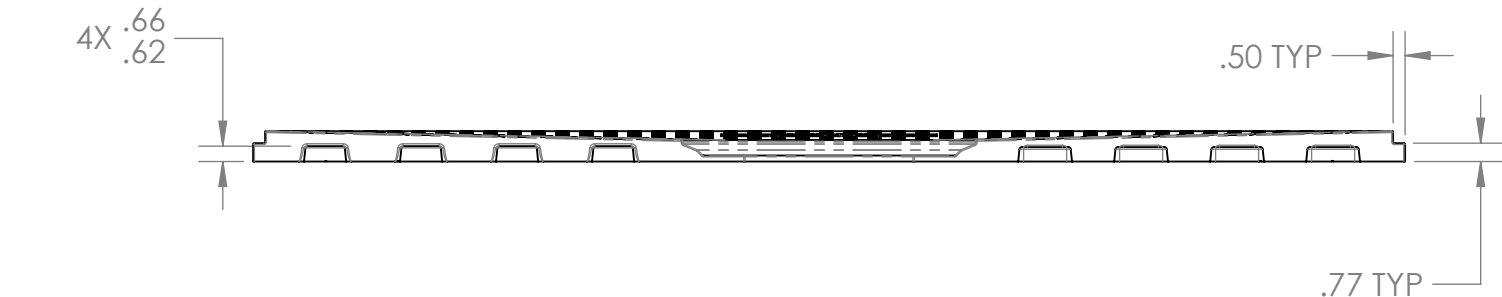
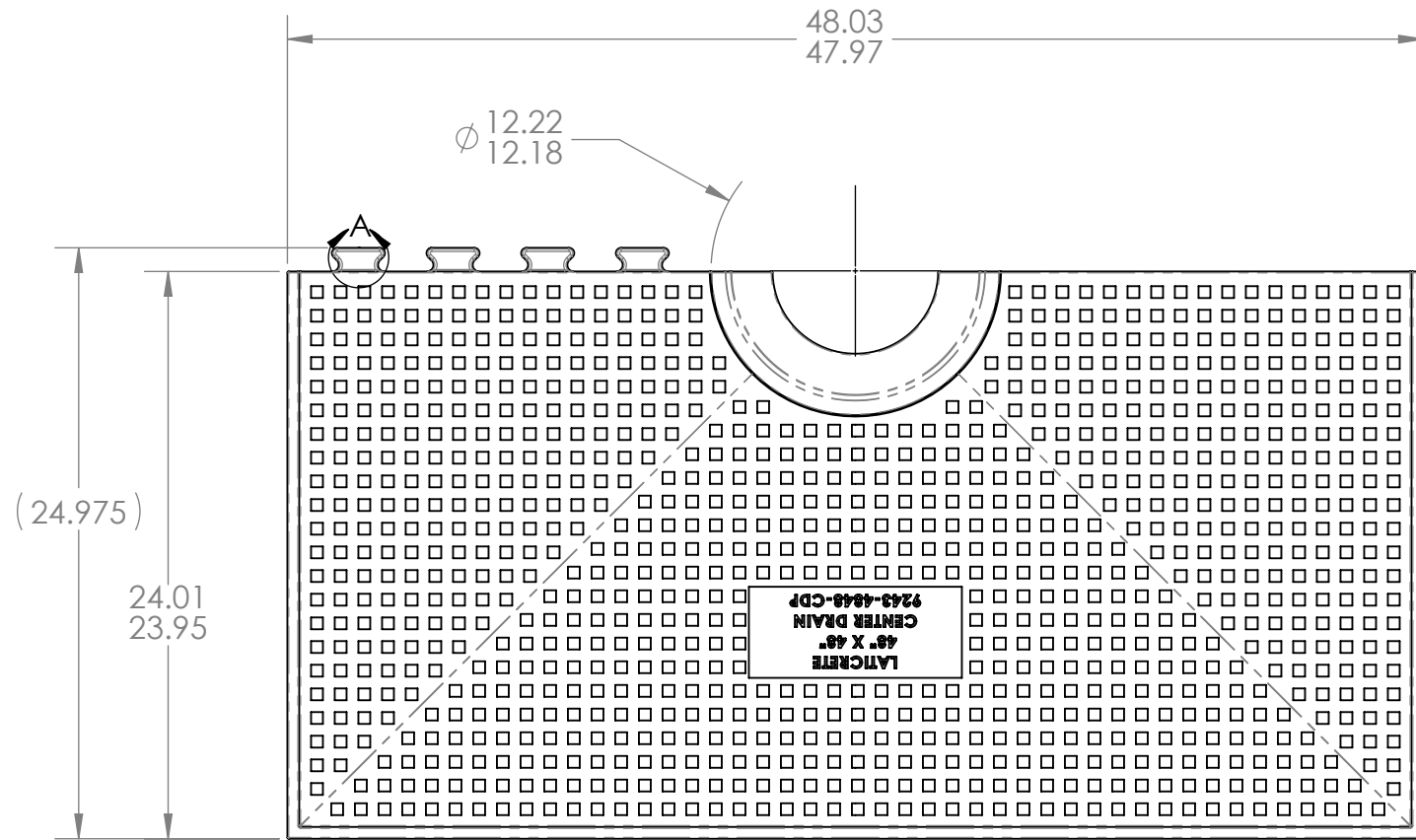


NOTES:

1. DENSITY TO BE A MIN OF 3.0 LBS/FT<sup>3</sup>.
2. MATERIAL TO BE A MIN 50 PSI COMPRESSIVE STRENGTH.
3. NO BURRS OR LOOSE MATERIAL LARGER THAN .10".
4. DRAWING IS FOR INSPECTION PURPOSES ONLY. ALL UNDIMENSIONED FEATURES TO BE HELD +/- .020" WITH RESPECT TO 3D CAD MODEL.



|  |   |             |       |  |         |
|--|---|-------------|-------|--|---------|
| <p><b>PROPRIETARY AND CONFIDENTIAL</b></p> <p>THE INFORMATION CONTAINED IN THIS DRAWING IS THE SOLE PROPERTY OF LATICRETE INTERNATIONAL, INC. ANY REPRODUCTION IN PART OR AS A WHOLE WITHOUT THE WRITTEN PERMISSION OF LATICRETE INTERNATIONAL IS PROHIBITED.</p> <p>LATICRETE INTERNATIONAL INC.<br/>91 AMITY ROAD<br/>BETHANY CT 06524</p> | UNLESS OTHERWISE SPECIFIED:   | NAME        | DATE  | <p><b>LATICRETE</b></p> <p>TITLE:<br/><b>48"X48" CENTER DRAIN PAN HALF</b></p> <p>SIZE DWG. NO. REV<br/><b>B</b> 9243-4848-CDP <b>A</b></p> <p>SCALE: 1:8 WEIGHT: SHEET 1 OF 1</p> |         |
|  | DIMENSIONS ARE IN INCHES<br>TOLERANCES:<br>ANGULAR: MACH ± 2 BEND ± 5<br>TWO PLACE DECIMAL ± .010<br>THREE PLACE DECIMAL ± .005 | DRAWN BY    | BAYER |  | 5/23/18 |
|  | INTERPRET GEOMETRIC TOLERANCING PER: ASME Y14.5 - 2009  | CHECKED BY  |       |  |         |
|  | MATERIAL<br>SEE NOTES   | APPROVED BY |       |  |         |
| FINISH<br>N/A  | COMMENTS:   |             |       |  |         |
| DO NOT SCALE DRAWING   |   |             |       |  |         |