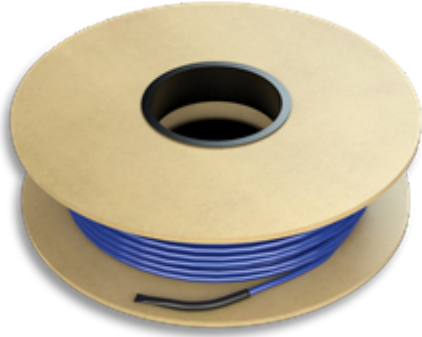




# STRATA\_HEAT™ Spliceless Wire

DS-26.2-0822

**Globally Proven  
Construction Solutions**



Representative samples have been evaluated by UL and meet applicable UL requirements.

## Suitable Substrates

- HYDRO BAN Board
- Concrete
- Mortar Bed
- Exterior Glue Plywood (Interior Only)
- Existing Ceramic Tile and Stone
- Cement Terrazzo
- Cement Backer Board

## 1. PRODUCT NAME

STRATA\_HEAT™ Spliceless Wire

## 2. MANUFACTURER

LATICRETE International, Inc.  
1 LATICRETE Park North  
Bethany, CT 06524-3423 USA

Telephone: +1.203.393.0010, ext. 1235  
Toll Free: 1.800.243.4788, ext. 1235  
Fax: +1.203.393.1684  
Website: [laticrete.com](http://laticrete.com)

## 3. PRODUCT DESCRIPTION

STRATA\_HEAT Wire is a versatile, splice-less, floor warming wire system designed for use under many types of finished floor coverings to provide luxury and comfort. Designed for use with STRATA\_HEAT Thermostat, STRATA\_HEAT Mat and STRATA\_HEAT Spacing Strips. With STRATA\_HEAT Wire there isn't any need to dig out the mat to bury splices between the cold lead and the heating portion of the wire or the heated wire termination. These splice-less junctions have a uniform diameter and easily fit into the STRATA\_HEAT Mat castellations.

### Advantages

- Component of LATICRETE Lifetime System Warranty.
- Spliceless design, to allow for an easier installation process
- No need to cut out the mat and/or the sub-floor to bury the cold lead
- Multiple spacing options allow for variability in heat output.
- This appliance wiring material component is recognized by Underwriters Laboratories, Inc. (UL)

## Shelf Life

Unlimited. Store at 40°F to 75°F (4°-24°C) in a covered area (out of the sun).

## Limitations

- Interior floor installations only.
- Adhesives/mastics, mortars and grouts for ceramic tile, pavers, brick and stone are not replacements for waterproofing membranes. When a waterproofing membrane is required use a HYDRO BAN Waterproofing Membrane (see Section 10 FILING SYSTEMS).
- Note: Surfaces must be structurally sound, stable and rigid enough to support ceramic/stone tile, thin brick and similar finishes. Substrate deflection under all live, dead and impact loads, including concentrated loads, must not exceed L/360 for thin-bed ceramic tile/brick installations or L/480 for thin-bed stone installations where L=length of span.

## Cautions

- Do not turn STRATA\_HEAT Wire on until entire installation of tile and grout has cured for a minimum of 72 hours at 70°F (21°C).
- When installing the STRATA\_HEAT Wire the factory splice must be at least 12" (30 CM) from the wall and fully encapsulated with thin-set and covered with tile.
- Do not staple heating elements directly.
- Use only appropriate size of STRATA\_HEAT Wire for specified area of floor to be heated. DO NOT TUCK/INSTALL/FOLD EXCESS WIRE INTO WALL CAVITY.
- Protect finished work from traffic until fully cured.

- All electrical connections must be made by a licensed electrician. Failure to do so will void all warranties and claims. Comply with all applicable building and electrical codes.
- Keep out of reach of children.

#### 4. TECHNICAL DATA

Specifications subject to change without notification. Results shown are typical but reflect test procedures used. Actual field performance will depend on installation methods and site conditions.

#### 5. INSTALLATION

- Please refer to STRATA\_HEAT™ Wire Installation Manual DS-044.6 for complete installation instructions.

#### 6. AVAILABILITY AND COST

##### Availability

LATICRETE materials are available worldwide.

##### For Distributor Information, Call:

Toll Free: 1.800.243.4788

Telephone: +1.203.393.0010

For on-line distributor information, visit LATICRETE at [laticrete.com](http://laticrete.com)

##### Cost

Contact a LATICRETE Distributor in your area.

#### 7. WARRANTY

See 10. FILING SYSTEM:

- DS 230.13: 1 Year Product Warranty (US - English)

#### 8. MAINTENANCE

Non-finish LATICRETE and LATAPOXY® installation materials require no maintenance but installation performance and durability may depend on properly maintaining products supplied by other manufacturers.

#### 9. TECHNICAL SERVICES

##### Technical Assistance

Information is available by calling the LATICRETE

Technical Service Hotline:

Toll Free: 1.800.243.4788, ext. 1235

Telephone: +1.203.393.0010, ext. 1235

Fax: +1.203.393.1948

##### Technical and Safety Literature

To acquire technical and safety literature, please visit our website at [laticrete.com](http://laticrete.com).

#### 10. FILING SYSTEM

Additional product information is available on our website at [laticrete.com](http://laticrete.com). The following is a list of related documents:

- DS 230.13: LATICRETE Product Warranty (United States and Canada)
- DS 230.05: LATICRETE 5 Year System Warranty (United States and Canada)
- DS 230.10: LATICRETE 10 Year System Warranty (United States and Canada)
- DS 025.0: LATICRETE 25 Year System Warranty (United States and Canada)
- DS 230.99: LATICRETE Lifetime System Warranty (United States and Canada)
- DS 236.0: 9235 Waterproofing Membrane
- DS 606.0: Floor Warming Thermostat
- DS 663.0: HYDRO BAN®
- DS 044.6: STRATA\_HEAT Wire Installation Manual
- DS-046.4: STRATA\_HEAT Smart Wi-Fi Thermostat Easy Set Up Guide
- DS-050.7: STRATA\_HEAT Programmable Thermostat Easy Set Up Guide
- DS-046.2: STRATA\_HEAT Smart Wi-Fi Thermostat Operating Manual
- DS-050.4: STRATA\_HEAT Programmable Thermostat Operating Manual
- DS-044.8: STRATA\_HEAT Smart Wi-Fi Thermostat Troubleshooting guide

LATICRETE International, Inc.

One LATICRETE Park North, Bethany, CT 06524-3423 USA • 1.800.243.4788 • +1.203.393.0010 • [www.laticrete.com](http://www.laticrete.com)

© 2022 LATICRETE International, Inc. All trademarks shown are the intellectual properties of their respective owners.