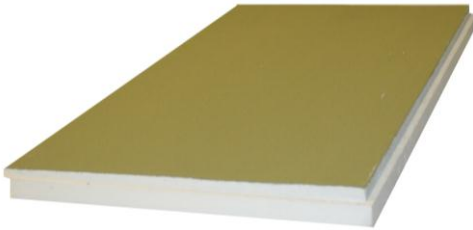




HYDRO BAN® Pre-Sloped Extension

DS-061.0-0514

**Globally Proven
Construction Solutions**



1. PRODUCT NAME

HYDRO BAN® Pre-Sloped Extension

2. MANUFACTURER

LATICRETE International, Inc.

1 LATICRETE Park North

Bethany, CT 06524-3423 USA

Telephone: +1.203.393.0010, ext. 235

Toll Free: 1.800.243.4788, ext. 235

Fax: +1.203.393.1684

Internet: www.laticrete.com

3. PRODUCT DESCRIPTION

HYDRO BAN Pre-Sloped Extension is made from high-density expanded polystyrene with a liquid waterproof membrane finish coat. HYDRO BAN Pre-Sloped Extension is a lightweight ready-to-tile extension to be installed with the HYDRO BAN Pre-Sloped Shower Pan to extend the length of the HYDRO BAN Pre-Sloped Shower Pan up to 2' (61 cm).

Materials: Circular saw with adjustable guide or a utility knife can be used for field modification, Latex modified medium bed mortar, 1/2" x 1/2" (12 mm x 12 mm) notched trowel for installing the HYDRO BAN Pre-Sloped Extension. HYDRO BAN Adhesive & Sealant and caulk gun to apply sealant in the HYDRO BAN Pre-Sloped Shower Pan and Extension rabbet joint.

Uses

- Interior use only
- Industrial, commercial and residential bathrooms or wet areas where a greater length is needed for the pre-sloped shower pan
- Stalled gang showers
- Pet showers

Advantages

- Designed for an easy add on to the HYDRO BAN Pre-Sloped Shower Pan.
- Can be used along with the HYDRO BAN Pre-Sloped Shower Pan to replace traditional mud bed shower pan construction.
- Ready to tile with a 1/4" per foot (6 mm per 30 cm) slope.

- Lightweight and durable. Easy to transport and handle during installation.
- Factory installed, code approved waterproofing meets ANSI A118.10 requirements.
- Can quickly and easily be modified to size on site.
- Works in conjunction with tile and stone installation materials.

Suitable Substrates

- Concrete
- Masonry
- Tile or Stone
- Exterior Glue Plywood *
- Cement Backer Board **
- OSB Or Advantech*

* Interior use only.

** Consult cement backer board manufacturer for specific installation recommendations.

Packaging

24" (61 cm) wide by 48" (122 cm) long packaged one per carton

Shelf Life

Factory sealed containers of this product are guaranteed to be of first quality for Five (5) years if stored at temperatures >32°F (0°C) and <110°F (43°C).

Limitations

- Adhesives/mastics, mortars and grouts for ceramic tile, pavers, brick and stone are not replacements for waterproofing membranes. When a waterproofing membrane is required, use HYDRO BAN.
- Note: Surfaces must be structurally sound, stable and rigid enough to support ceramic/stone tile, thin brick and similar finishes. Substrate deflection under all live, dead and impact loads, including concentrated loads, must not exceed L/360 for thin bed ceramic tile/brick installations or L/480 for thin bed stone installations and L/600 for all exterior veneer applications where L=span length.
- Do not expose unprotected HYDRO BAN Pre-Sloped Extension to sun or weather for more than 30 days.
- Do not expose to rubber solvents or ketones.
- Must be covered with ceramic tile, stone, finish. Use protection board for temporary cover prior to finishing.

Cautions

Consult MSDS for more safety information.

During cold weather, protect finished work from traffic until fully cured.

- For white and light-colored marbles, use a white latex portland cement thin-set mortar.

- For green and moisture sensitive marble, agglomerates and resin backed tile and stone use LATAPOXY® 300 Adhesive (refer to DS 633.0).
- If the waterproof coating on the HYDRO BAN® Pre-Sloped Shower Pan is punctured during installation or from job site construction activity re-coat the punctured area and 2" (50 mm) around the area with two coats of HYDRO BAN, follow DS 663.0 or DS 663.5 for full instructions.

4. TECHNICAL DATA

Applicable Standard

Waterproofing membrane meets ANSI A 118.10

5. INSTALLATION

Preparatory Work

Extensions are 24" x 48" (61 x 122 cm) with a 1/4" per foot slope. Extensions are pre-notched to connect to the HYDRO BAN Pre-Sloped Shower Pan base.

- Ensure that walls are square and plumb for proper fit of pan.
- Subfloor under pan must be clean and level.
- Test fit HYDRO BAN Pre-Sloped Extension to make certain it fits properly and sits flush and level with floor.
- Remove the HYDRO BAN Pre-Sloped Extension.
- If the HYDRO BAN Pre-Sloped Extension needs to be site adjusted to fit the shower use a circular saw or utility knife to cut the HYDRO BAN Pre-Sloped Extension to the proper dimensions.

Application (See Detail ES-WP 311)

- Apply latex modified medium bed mortar (e.g. 4-XLT) to the floor area and skim coat the underside of HYDRO BAN Pre-Sloped Extension. Use a 1/2" x 1/2" (12 x 12 mm) square notched trowel.
- Before setting ramp in place, apply a 1/4" bead of HYDRO BAN Adhesive & Sealant to the HYDRO BAN Pre-Sloped Shower Pan base lap joint.
- Set Extension firmly into wet mortar and attach to HYDRO BAN Pre-Sloped Shower Pan base. Press ramp firmly into mortar ensuring a void free install.
- Following installation, spread two coats of HYDRO BAN over HYDRO BAN Pre-Sloped Extension seam following instructions in DS 663.0 and 663.5.
- Apply weight (thin-set bags) equally across HYDRO BAN Pre-Sloped Extension for 30 minutes.
- Install tile using a modified thin-set mortar in accordance with the industry guidelines. Mastic adhesives are never to be used.

6. AVAILABILITY AND COST

Availability

LATICRETE® and LATAPOXY® materials are available worldwide.

For Distributor information:

Toll Free: 1.800.243.4788

Telephone: +1.203.393.0010

For on-line distributor information, visit LATICRETE at

www.laticrete.com

Cost

Contact a LATICRETE distributor in your area.

7. WARRANTY

See 10. FILING SYSTEM:

DS 230.13: LATICRETE Product Warranty

A component of:

DS 230.10: LATICRETE 10 Year System
Warranty (United States and Canada)

DS 025.0: LATICRETE 25 Year System
Warranty (United States and Canada)
DS 230.99: LATICRETE Lifetime System
Warranty (United States and Canada)

8. MAINTENANCE

LATICRETE and LATAPOXY grouts require routine cleaning with a neutral pH soap and water. All other LATICRETE and LATAPOXY materials require no maintenance but installation performance and durability may depend on properly maintaining products supplied by other manufacturers.

9. TECHNICAL SERVICES

Technical Assistance

Information is available by calling the LATICRETE Technical Service Hotline:

Toll Free: 1.800.243.4788 ext. 235

Telephone: +1.203.393.0010 ext. 235

Fax: +1.203.393.1948

Technical and Safety Literature

To acquire technical and safety literature, please visit our website at www.laticrete.com

10. FILING SYSTEM

Additional product information is available on our website at www.laticrete.com. The following is a list of related documents:

DS 230.13: LATICRETE Product Warranty

DS 230.10: LATICRETE 10 Year System
Warranty (United States and Canada)

DS 025.0: LATICRETE 25 Year System
Warranty (United States and Canada)

DS 230.99: LATICRETE Lifetime System
Warranty (United States and Canada)

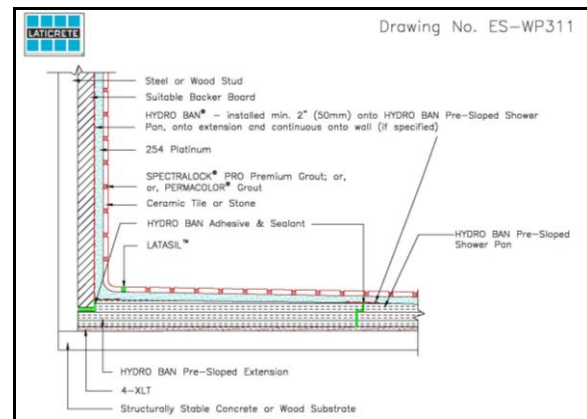
DS 108.0: HYDRO BAN Adhesive & Sealant

DS 663.0: HYDRO BAN

DS 031.0: HYDRO BAN Pre-Sloped Shower Pan

DS 080.0: 4-XLT

DS 633.0: LATAPOXY 300 Adhesive



LATICRETE International, Inc.
One LATICRETE Park North, Bethany, CT 06524-3423 USA • 1.800.243.4788 • +1.203.393.0010 • www.laticrete.com

©2014 LATICRETE International, Inc.
All trademarks shown are the intellectual properties of their respective owners.