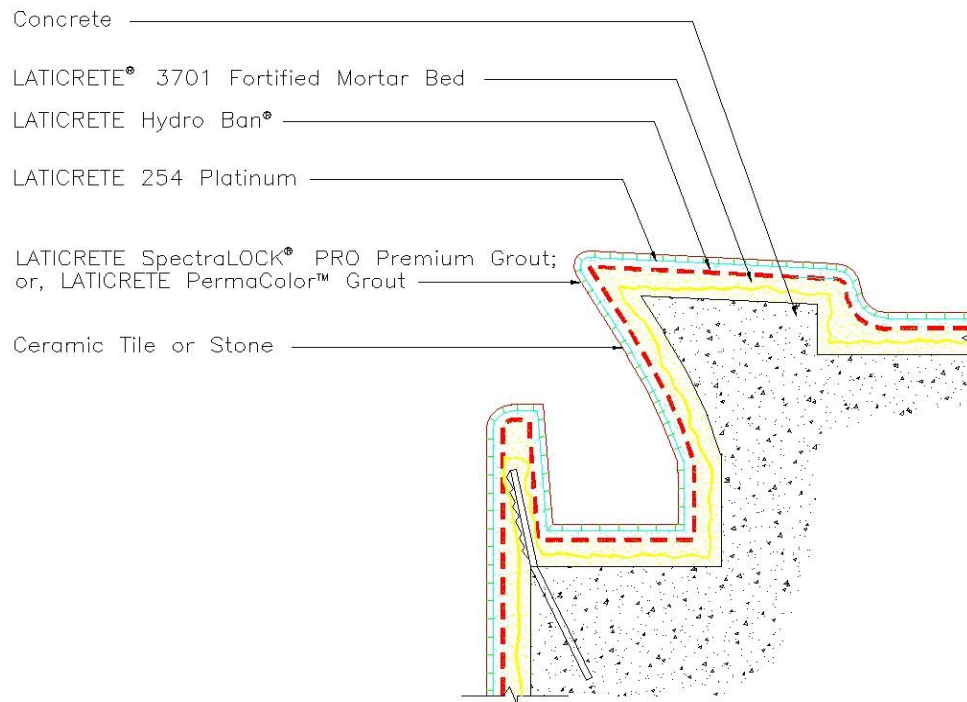


Drawing No. ES P601A



Note:  
Slurry Bond Coat of LATICRETE 254 Platinum  
is required under the mortar bed at all horizontal surfaces.

Revision Date: 5/12 Scale: N.T.S.

AS A PROFESSIONAL COURTESY, LATICRETE OFFERS  
TECHNICAL SERVICES FREE OF CHARGE. THE USER  
MAINTAINS ALL RESPONSIBILITY FOR VERIFYING THE  
APPLICABILITY AND SUITABILITY OF THE TECHNICAL  
SERVICE OR INFORMATION PROVIDED.

(C)2012 LATICRETE INTERNATIONAL, INC. ALL RIGHTS RESERVED. THE RIGHT TO UTILIZE  
LATICRETE DETAILS FOR COMMERCIAL PURPOSES IS GRANTED EXCLUSIVELY TO CONTRACTORS,  
ARCHITECTS, QUANTITY SURVEYORS, ENGINEERS, AND SPECIFICATIONS WRITERS. LATICRETE (®),  
LATAPOXY (®) ARE REGISTERED TRADEMARKS OF LATICRETE INTERNATIONAL, INC. US &  
FOREIGN PATENT AND TRADEMARK OFFICES. MARCA REGISTRADA. ALL OTHER TRADEMARKS ARE  
PROPERTY OF THEIR RESPECTIVE COMPANIES.

**NOTE: "For complete application information and limitations consult related Product Data Sheets and Execution Statements related to this detail, and applicable industry standards."**

